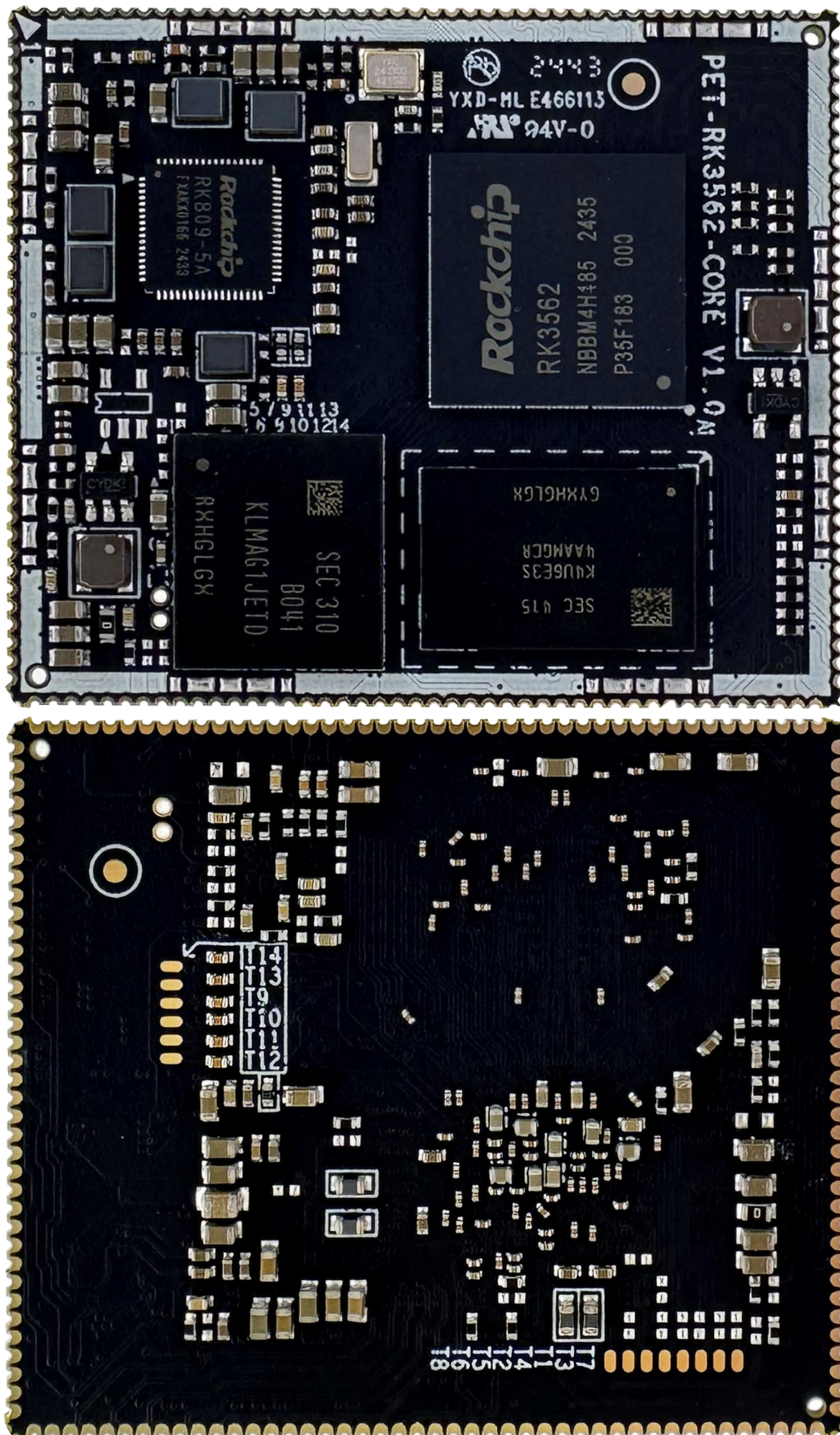
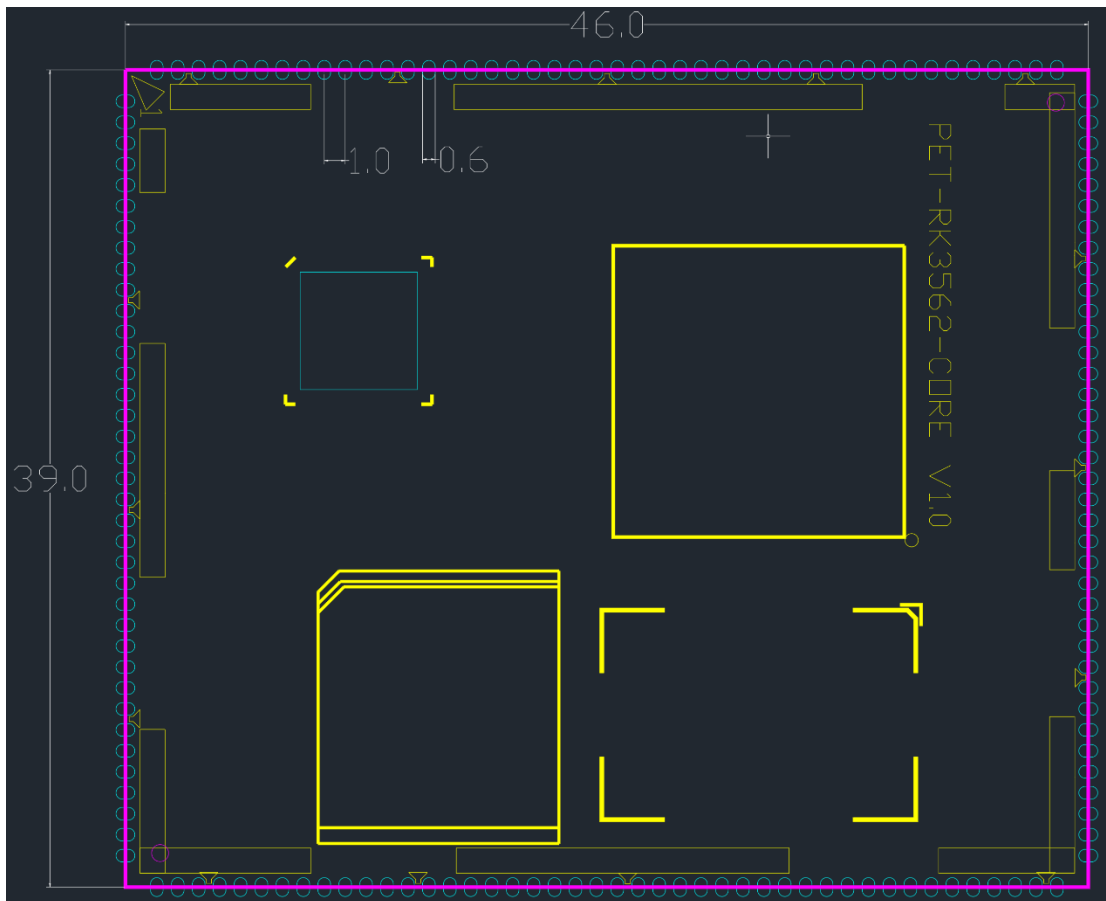
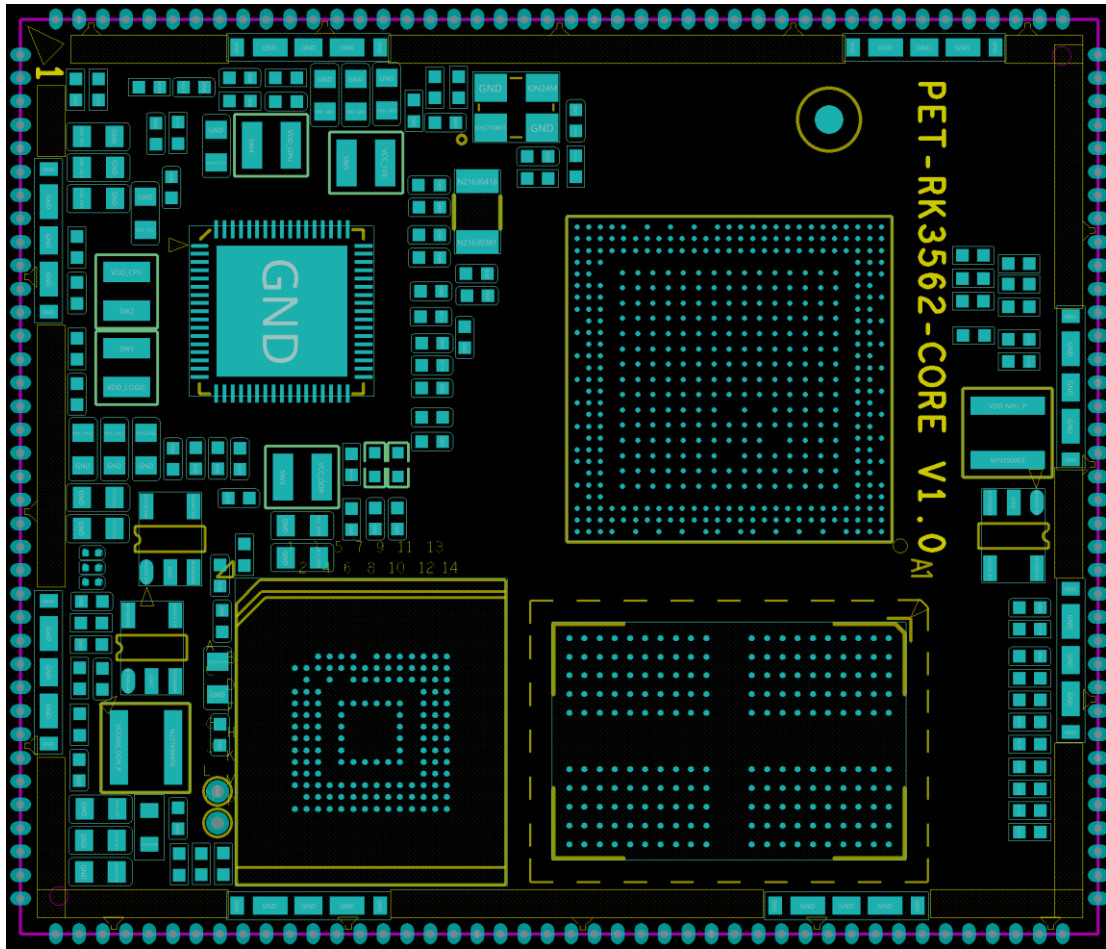




PET_RK3562_CORE 核心板 说明书

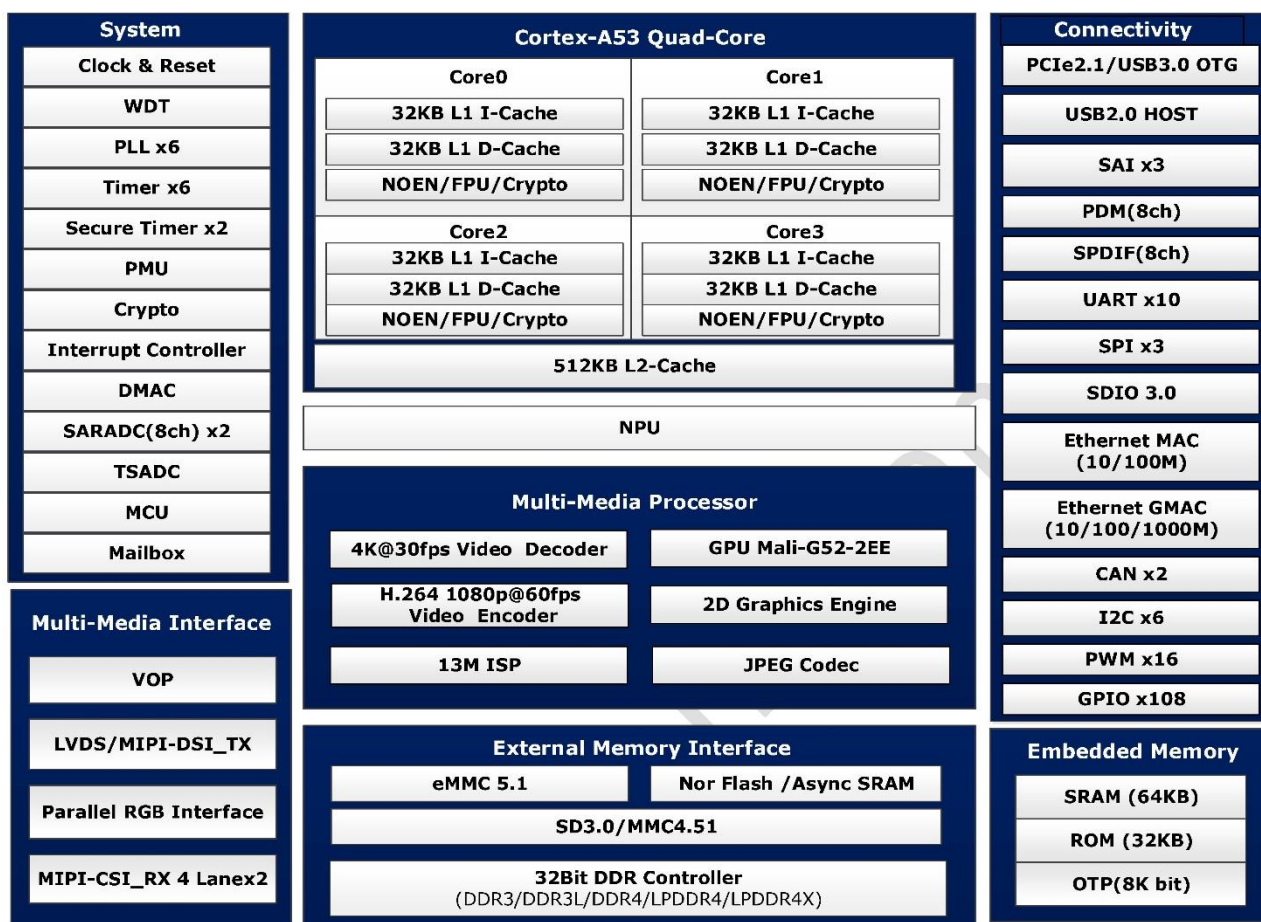
一、PET_RK3562_CORE 核心板图片





二、PET_RK3562_CORE 核心板详细参数

RK3562



PET-RK3562 核心板参数	
处理器	RK3562 Cortex A53 四核 64 位 ARM64，最高主频 2.0G
内置 NPU	RKNN NPU，1TOPS 算力，用于 AI 计算
内置 GPU	MALI-G52-2EE，支持 OpenCL 2.0，OpenGL ES 1.1、2.0、3.2，Vulkan1.1
内置视频编解码	支持 4K@60fps H265 格式硬解码、1080P@60fps 硬编码
内存 LPDDR4	2GB / 4GB / 8GB，标配 2GB
存储 EMMC	16GB / 32GB / 64GB / 128GB，标配 16GB
操作系统	支持安卓 Android 13、Buildroot Linux、Debian11、Ubuntu 22.04
PET-RK3562 核心板引脚功能	
LVDS 显示输出	双 8 双通道 1920x1080 (通过底板 MIPI 转 LVDS 芯片实现)、单 8 单通道 1280x800
eDP 显示输出	最大支持分辨率 1920x1080 (通过底板 MIPI 转 eDP 芯片实现)
MIPI 显示输出	最大支持分辨率 2048x1080
RGB 显示输出	最大支持分辨率 1920x1080
视频输入接口	MIPI CSI 2 路(8 Lane)，最大支持 1300 万像素
按键接口	电源键、烧写键、复位键、ADC 按键、GPIO 按键、GPIO 矩阵键盘
千兆以太网接口	1 路
百兆以太网接口	1 路

USB 接口	1 路 USB3.0、2 路 USB2.0、OTG 1 路；用于 USB 外设、4G/5G 模组、USB 摄像头等
SDIO 接口	2 路，可用于 TF 卡、WIFI 蓝牙模组等
SPI 接口	3 路
SARADC 接口	16 路，10bit / 1MSPS / 12MHz 频率；用于 ADC 按键、ADC 输入检测
I2C 接口	6 路，用于电容触摸屏/RTC/NFC/I2C 外设等
UART 串口	10 路
I2S 接口	3 路
PWM 接口	16 路，用于 IR 红外输入、PWM 输出、显示屏背光控制等
CAN 接口	2 路
PCIE2.1 接口	1 路，2 Lane；可用于 M2 电子盘等
看门狗	1 个，CPU 内置
SPDIF 输出	1 路，8 通道
PDM 输入	1 路，8 通道
耳机输出接口	1 路，双通道（通过底板功放芯片实现 15W 喇叭驱动能力）
喇叭输出接口	1 路，8 欧 1.3W
麦克风输入接口	2 路
GPIO/中断	多路
PET-RK3562 核心板结构参数	
尺寸	46 x 39 mm，厚度 1.2mm
邮票孔间距	1.0mm
引脚数	176 pin
PCB 工艺	八层板，沉金工艺

注意：RK3562 引脚大部分是功能复用的，以上列表内的资源存在不能同时使用的情况，引脚功能复用情况可以查询下表或查看我司核心板精简版原理图。

三、PET_RK3562_CORE 核心板引脚详细说明

	名称	SDK 默认功能	CPU 引脚可选配置功能
1	VCC5V0_SYS	5V 电源输入	
2	VCC_3V3	3.3V 电源输入	
3	VCC_1V8	1.8V 电源输出	
4	VCC3V3_SD	3.3V 电源(TF 卡)	
5	GND	电源地	
6	PMIC_EXT_EN	EXT_EN 输出	
7	PMIC_PWRON	电源键信号输入	
8	RESETn	复位按键	
9	RK809_VDC	上电开机信号输入	
10	SPK_CTL	GPIO(功放开关)	VO_LCDC_D10/I2S1_SDI1_M0/UART4_RX_M0/UART3_RTSN_M0/GPIO3_D1_d
11	HP_DET_H	GPIO(耳机检测)	VO_LCDC_D7/I2S1_SDI0_M0/UART4_TX_M0/GPIO3_D0_d
12	MIC1_IN	麦克风输入	MIC1_IN
13	MIC2_IN	麦克风输入	MIC2_IN
14	HPR_OUT	耳机输出	HPR_OUT
15	HPL_OUT		HPL_OUT
16	HP_SNS		HP_SNS
17	SPKN_OUT	喇叭输出	SPKN_OUT
18	SPKP_OUT		SPKP_OUT
19	GND	电源地	
20	WIFI_REG_ON_H	GPIO(WIFI 开关)	I2C1_SCL_M0/GPIO0_B3_d
21	GPIO0_C7_d	CAN 总线	UART6_RX_M0/CAN0_RX_M2/GPIO0_C7_d
22	BT_WAKE_HOST_H		UART6_TX_M0/CAN0_TX_M2/GPIO0_C6_d
23	WIFI_WAKE_HOST_H	GPIO(GMAC)	I2C1_SDA_M0/GPIO0_B4_d
24	SPI0_CLK_M0	GPIO	UART2_RTSN_M0/PWM0_M0/SPI0_CLK_M0/GPIO0_C3_d
25	SPI0_CSN0_M0	GPIO	UART2_CTSN_M0/PWM5_M0/SPI0_CSN0_M0/GPIO0_C2_d

26	SPI0_MISO_M0	GPIO	UART6_RTSN_M0/PWM2_M0/SPI0_MISO_M0/GPIO0_C5_d
27	SPI0_MOSI_M0	GPIO	UART6_CTSN_M0/PWM1_M0/SPI0_MOSI_M0/GPIO0_C4_d
28	RTCIC_INT_L	GPIO(RTC 中断)	SDMMC0_PWREN/I2C4_SCL_M1/PMU_DEBUG/GPIO0_A5_d
29	UART1_TX_M0	UART1(BT)	UART1_TX_M0/RGMII_TXD1_M1/I2S0_SDO2_M1/PWM5_M1/RMII_TXD1/GPIO1_D2_d
30	UART1_RX_M0		UART1_RX_M0/RGMII_TXD0_M1/I2S0_SDO1_M1/PWM4_M1/RMII_TXD0/GPIO1_D1_d
31	UART1_CTSn_M0		UART1_CTSN_M0/RGMII_RXD0_M1/I2S0_SDI3_M1/PWM7_M1/RMII_RXD0/GPIO1_D4_d
32	UART1_RTSn_M0		UART1_RTSN_M0/RGMII_TXEN_M1/I2S0_SDI2_M1/PWM6_M1/RMII_TXEN/GPIO1_D3_d
33	I2S2_SDI_M0	GPIO(NFC)	I2S2_SDI_M0/RGMII_RXER_M1/UART4_CTSN_M1/SPI2_MISO_M1/PWM15_M1/RMII_RXER/GPIO2_A0_d
34	I2S2_SDO_M0	GPIO(4G 复位)	I2S2_SDO_M0/RGMII_RXD1_M1/UART4_RTSN_M1/SPI2_MOSI_M1/PWM14_M1/RMII_RXD1/GPIO1_D7_d
35	I2S2_SCLK_M0	UART4	I2S2_SCLK_M0/RGMII_CLK_M1/UART4_RX_M1/SPI2_CSN1_M1/RMII_CLK/GPIO1_D5_d
36	I2S2_LRCK_M0		I2S2_LRCK_M0/RGMII_RXDV_M1/UART4_TX_M1/SPI2_CSN0_M1/RMII_RXDV_CRD/GPIO1_D6_d
37	BT_REG_ON_H	GPIO(BT 开关)	SDMMC1_DET_N/RGMII_MDIO_M1/PWM3_M1/I2C5_SDA_M1/RMII_MDIO/GPIO1_D0_d
38	SDIO_D1	SDIO(WIFI)	SDMMC1_D1/RGMII_TXD3_M1/I2S0_SDI1_M1/PWM9_M1/GPIO1_C2_d
39	SDIO_D0		SDMMC1_D0/RGMII_TXD2_M1/I2S0_SDI0_M1/PWM8_M1/GPIO1_C1_d
40	SDIO_CLK		SDMMC1_CLK/RGMII_RXCLK_M1/I2S0_MCLK_M1/PWM1_M1/GPIO1_C6_d
41	SDIO_CMD		SDMMC1_CMD/RGMII_RXD3_M1/I2S0_SCLK_M1/PWM0_M1/GPIO1_C5_d
42	SDIO_D3		SDMMC1_D3/RGMII_RXD2_M1/I2S0_LRCK_M1/PWM11_M1/GPIO1_C4_d
43	SDIO_D2		SDMMC1_D2/RGMII_TXCLK_M1/I2S0_SDO0_M1/PWM10_M1/GPIO1_C3_d
44	SDMMC0_CLK	SDMMC0(TF 卡)	SDMMC0_CLK/TEST_CLK_OUT/UART5_TX_M0/SPI1_CLK_M1/CAN1_TX_M0/GPIO1_C0_d
45	SDMMC0_CMD		SDMMC0_CMD/SPDIF_TX_M2/UART5_RX_M0/CAN1_RX_M0/GPIO1_B7_u
46	SDMMC0_D0		SDMMC0_D0/UART0_RX_M1/UART7_RX_M1/SPI1_MOSI_M1/DSM_AUD_LP/GPIO1_B3_u
47	SDMMC0_D1		SDMMC0_D1/UART0_TX_M1/UART7_TX_M1/SPI1_MISO_M1/DSM_AUD_LN/GPIO1_B4_u
48	SDMMC0_D2		SDMMC0_D2/UART5_CTSN_M0/SPI1_CSN1_M1/PWM10_M0/DSM_AUD_RP/GPIO1_B5_u
49	SDMMC0_D3		SDMMC0_D3/UART5_RTSN_M0/SPI1_CSN0_M1/PWM11_M0/DSM_AUD_RN/GPIO1_B6_u
50	SDMMC0_DET_L		SDMMC0_DET_N/I2C4_SDA_M1/GPIO0_A4_u
51	PWM_NPU	PWM6	UART2_RX_M0/PWM6_M0/CAN1_RX_M1/NPU_AVS/GPIO0_C1_d
52	PMIC_32KOUT_WIFI	32.768K 时钟	CLK32K
53	SARADC0_IN1_KEY/RECOVERY	烧写键	SARADC0_IN1

54	SARADC0_BOOT	ROM 键	SARADC0_BOOT
55	GPIO1_C7_d	GPIO	SDMMC1_PWREN/RGMII_MDC_M1/PWM2_M1/I2C5_SCL_M1/RMII_MDC/GPIO1_C7_d
56	GND	电源地	
57	PWM7_IR	IR 红外输入	UART2_TX_M0/PWM7_M0/GPU_AVS/CAN1_TX_M1/GPIO0_C0_d
58	UART0_TX_M0_DEBUG	UART0 调试串口	UART0_TX_M0/JTAG_CPU_MCU_TCK_M0/GPIO0_D1_u
59	UART0_RX_M0_DEBUG		UART0_RX_M0/JTAG_CPU_MCU_TMS_M0/GPIO0_D0_u
60	UART3_TX_M0	UART3	VO_LCDC_HSYNC/I2S1_SDO1_M0/UART9_CTSN_M0/SPI2_CSN1_M0/I2C1_SCL_M1/UART3_TX_M0/GPIO4_B4_d
61	UART3_RX_M0		VO_LCDC_VSYNC/I2S1_SDO2_M0/UART9_RTSN_M0/SPI2_CSN0_M0/I2C1_SDA_M1/UART3_RX_M0/GPIO4_B5_d
62	UART5_TX_M1	UART5	I2S0_SDO1_M0/I2S0_SDI3_M0/PDM_CLK0_M0/PCIE20_CLKREQN_M1/UART5_TX_M1/GPIO3_A6_d
63	UART5_RX_M1		I2S0_SDO2_M0/I2S0_SDI2_M0/PDM_SDI2_M0/PCIE20_WAKEN_M1/UART5_RX_M1/GPIO3_A7_d
64	UART7_TX_M0	UART7	VO_LCDC_D3/I2S1_MCLK_M0/UART7_TX_M0/GPIO3_C4_d
65	UART7_RX_M0		VO_LCDC_D6/I2S1_SDO0_M0/UART7_RX_M0/GPIO3_C7_d
66	GND	电源地	
67	GPIO4_B6_d	GPIO(唤醒 BT)	VO_LCDC_DEN/I2S1_SDO3_M0/UART3_CTSN_M0/SPI2_CLK_M0/GPIO4_B6_d
68	I2C2_SCL_M1	GPIO(NFC)	VO_LCDC_D11/I2S1_SDI2_M0/UART7_CTSN_M0/SPI2_MISO_M0/I2C2_SCL_M1/GPIO3_D2_d
69	I2C2_SDA_M1	GPIO(NFC)	VO_LCDC_D12/I2S1_SDI3_M0/UART7_RTSN_M0/SPI2_MOSI_M0/I2C2_SDA_M1/GPIO3_D3_d
70	GPIO3_B0_d	GPIO(指示灯)	I2S0_SDO3_M0/I2S0_SDI1_M0/PDM_SDI1_M0/PCIE20_PERSTN_M1/GPIO3_B0_d
71	CAM_RST1_L	GPIO(Camera)	VO_LCDC_D5/I2S1_LRCK_M0/UART4_RTSN_M0/PWM15_M0/GPIO3_C6_d
72	CAM_RST0_L	GPIO(Camera)	VO_LCDC_D4/I2S1_SCLK_M0/UART4_CTSN_M0/PWM14_M0/GPIO3_C5_d
73	CAM_PDN1_L	GPIO(Camera)	I2S1_SDI0_M1/ISP_FLASH_TRIGIN/UART3_RTSN_M1/GPIO3_C1_d
74	CAM_PDN0_L	GPIO(Camera)	I2S1_SDO3_M1/I2S1_SDI1_M1/UART3_RX_M1/SPI0_MISO_M1/GPIO3_C0_d
75	LCD_PWREN_H	GPIO(LCD 电源)	I2S2_MCLK_M0/ETH_CLK_25M_OUT_M1/CLK1_32K_OUT/SPI2_CLK_M1/I2S0_SDO3_M1/GPIO2_A1_d
76	UART2_RX_M1	UART2	I2C3_SDA_M0/UART2_RX_M1/SPDIF_TX_M0/CAN0_RX_M0/UART5_RTSN_M1/GPIO3_A1_d
77	UART2_TX_M1		I2C3_SCL_M0/UART2_TX_M1/PDM_SDI3_M0/UART5_CTSN_M1/CAN0_TX_M0/GPIO3_A0_d
78	ETH_CLK_25M_OUT_M0	25M 时钟	VO_LCDC_D17/ETH_CLK_25M_OUT_M0/CAM_CLK0_OUT_M1/I2S2_SCLK_M1/PDM_CLK1_M1/GPIO4_B1_d
79	CAM_CLK3_OUT	Camera 时钟	I2S1_SDO0_M1/CAM_CLK3_OUT/UART8_RTSN_M0/SPI0_CLK_M1/PWM13_M1/GPIO3_B5_d

80	CAM_CLK2_OUT	Camera 时钟	I2S1_LRCK_M1/CAM_CLK2_OUT/UART8_CTSN_M0/SPI0_MOSI_M1/PWM12_M1/GPIO3_B4_d
81	CAM_CLK1_OUT	UART8	I2S1_SCLK_M1/CAM_CLK1_OUT_M0/UART8_RX_M0/GPIO3_B3_d
82	CAM_CLK0_OUT		I2S1_MCLK_M1/CAM_CLK0_OUT_M0/UART8_TX_M0/GPIO3_B2_d
83	I2C5_SDA_M0	I2C5(NFC)	I2C5_SDA_M0/ISP_FLASH_TRIGOUT/UART9_RX_M1/GPIO3_C3_d
84	I2C5_SCL_M0		I2C5_SCL_M0/ISP_PRELIGHT_TRIGOUT/UART9_TX_M1/GPIO3_C2_d
85	I2C4_SDA_M0	I2C4(Camera)	I2S1_SDO2_M1/I2S1_SDI2_M1/UART3_TX_M1/SPI0_CSN0_M1/I2C4_SDA_M0/CAN0_RX_M1/GPIO3_B7_d
86	I2C4_SCL_M0		I2S1_SDO1_M1/I2S1_SDI3_M1/UART3_CTSN_M1/SPI0_CSN1_M1/I2C4_SCL_M0/CAN0_TX_M1/GPIO3_B6
87	USB_OTG0ID_GPIO	GPIO	VO_LCDC_D16/RGMII_RXER_M0/UART1_CTSN_M1/PDM_SDI1_M1/UART6_RX_M1/GPIO4_B0_d
88	GND	电源地	
89	RGMII_CLK_M0	千兆以太网 GMAC	VO_LCDC_CLK/RGMII_CLK_M0/CAM_CLK1_OUT_M1/PDM_CLK0_M1/GPIO4_B7_d
90	RGMII_RXCLK_M0		VO_LCDC_D21/RGMII_RXCLK_M0/I2S2_LRCK_M1/PWM12_M0/GPIO4_A1_d
91	RGMII_RXDV_M0		VO_LCDC_D9/RGMII_RXDV_M0/UART1_RTSN_M1/PDM_SDI0_M1/UART6_TX_M1/GPIO4_A7_d
92	RGMII_RXD0_M0		VO_LCDC_D1/RGMII_RXD0_M0/UART1_TX_M1/PDM_SDI2_M1/I2C3_SCL_M1/GPIO4_A5_d
93	RGMII_RXD1_M0		VO_LCDC_D8/RGMII_RXD1_M0/UART1_RX_M1/PDM_SDI3_M1/I2C3_SDA_M1/GPIO4_A6_d
94	RGMII_RXD2_M0		VO_LCDC_D19/RGMII_RXD2_M0/UART8_CTSN_M1/SPI1_CSN0_M0/GPIO3_D7_d
95	RGMII_RXD3_M0		VO_LCDC_D20/RGMII_RXD3_M0/UART8_RTSN_M1/SPI1_CSN1_M0/GPIO4_A0_d
96	RGMII_TXCLK_M0		VO_LCDC_D15/RGMII_TXCLK_M0/I2S2_MCLK_M1/SPI1_CLK_M0/GPIO3_D6_d
97	RGMII_TXEN_M0		VO_LCDC_D0/RGMII_TXEN_M0/PWM13_M0/GPIO4_A4_d
98	RGMII_TXD0_M0		VO_LCDC_D22/RGMII_TXD0_M0/UART6_CTSN_M1/SPI1_MOSI_M0/GPIO4_A2_d
99	RGMII_TXD1_M0		VO_LCDC_D23/RGMII_TXD1_M0/UART6_RTSN_M1/SPI1_MISO_M0/GPIO4_A3_d
100	RGMII_TXD2_M0		VO_LCDC_D13/RGMII_TXD2_M0/UART8_TX_M1/I2S2_SDI_M1/GPIO3_D4_d
101	RGMII_TXD3_M0		VO_LCDC_D14/RGMII_TXD3_M0/UART8_RX_M1/I2S2_SDO_M1/GPIO3_D5_d
102	RGMII_MDIO_M0		VO_LCDC_D18/RGMII_MDIO_M0/UART9_RX_M0/GPIO4_B3_d
103	RGMII_MDC_M0		VO_LCDC_D2/RGMII_MDC_M0/UART9_TX_M0/GPIO4_B2_d
104	GND	电源地	
105	MIPI_CSI_RX1_CLK1N	摄像头 MIPI CSI	MIPI_CSI_RX1_CLK1N
106	MIPI_CSI_RX1_CLK1P		MIPI_CSI_RX1_CLK1P
107	MIPI_CSI_RX1_D3P		MIPI_CSI_RX1_D3P

108	MIPI_CSI_RX1_D3N		MIPI_CSI_RX1_D3N
109	MIPI_CSI_RX1_D2P		MIPI_CSI_RX1_D2P
110	MIPI_CSI_RX1_D2N		MIPI_CSI_RX1_D2N
111	MIPI_CSI_RX1_CLK0P		MIPI_CSI_RX1_CLK0P
112	MIPI_CSI_RX1_CLK0N		MIPI_CSI_RX1_CLK0N
113	MIPI_CSI_RX1_D1P		MIPI_CSI_RX1_D1P
114	MIPI_CSI_RX1_D1N		MIPI_CSI_RX1_D1N
115	MIPI_CSI_RX1_D0P		MIPI_CSI_RX1_D0P
116	MIPI_CSI_RX1_D0N		MIPI_CSI_RX1_D0N
117	MIPI_CSI_RX0_CLK1N		MIPI_CSI_RX0_CLK1N
118	MIPI_CSI_RX0_CLK1P		MIPI_CSI_RX0_CLK1P
119	MIPI_CSI_RX0_D3P		MIPI_CSI_RX0_D3P
120	MIPI_CSI_RX0_D3N		MIPI_CSI_RX0_D3N
121	MIPI_CSI_RX0_D2P		MIPI_CSI_RX0_D2P
122	MIPI_CSI_RX0_D2N		MIPI_CSI_RX0_D2N
123	MIPI_CSI_RX0_CLK0P		MIPI_CSI_RX0_CLK0P
124	MIPI_CSI_RX0_CLK0N		MIPI_CSI_RX0_CLK0N
125	MIPI_CSI_RX0_D1P		MIPI_CSI_RX0_D1P
126	MIPI_CSI_RX0_D1N		MIPI_CSI_RX0_D1N
127	MIPI_CSI_RX0_D0P		MIPI_CSI_RX0_D0P
128	MIPI_CSI_RX0_D0N		MIPI_CSI_RX0_D0N
129	MIPI_DSI_TX_D3P/LVDS_TX_D3P	显示屏 MIPI/LVDS	MIPI_DSI_TX_D3P/LVDS_TX_D3P
130	MIPI_DSI_TX_D3N/LVDS_TX_D3N		MIPI_DSI_TX_D3N/LVDS_TX_D3N
131	MIPI_DSI_TX_D2N/LVDS_TX_D2N		MIPI_DSI_TX_D2N/LVDS_TX_D2N
132	MIPI_DSI_TX_D2P/LVDS_TX_D2P		MIPI_DSI_TX_D2P/LVDS_TX_D2P
133	MIPI_DSI_TX_CLKP/LVDS_TX_CLKP		MIPI_DSI_TX_CLKP/LVDS_TX_CLKP
134	MIPI_DSI_TX_CLKN/LVDS_TX_CLKN		MIPI_DSI_TX_CLKN/LVDS_TX_CLKN
135	MIPI_DSI_TX_D1N/LVDS_TX_D1N		MIPI_DSI_TX_D1N/LVDS_TX_D1N

136	MIPI_DSI_TX_D1P/LVDS_TX_D1P		MIPI_DSI_TX_D1P/LVDS_TX_D1P
137	MIPI_DSI_TX_D0P/LVDS_TX_D0P		MIPI_DSI_TX_D0P/LVDS_TX_D0P
138	MIPI_DSI_TX_D0N/LVDS_TX_D0N		MIPI_DSI_TX_D0N/LVDS_TX_D0N
139	GND	电源地	
140	LCD_BL_PWM	PWM4(背光)	SPI0_CSN1_M0/PWM4_M0/CPU_AVS/SPDIF_TX_M1/GPIO0_B7_d
141	I2C2_SDA_TP	I2C2(TP)	I2C2_SDA_M0/PCIE20_WAKEN_M0/GPIO0_B6_d
142	I2C2_SCL_TP		I2C2_SCL_M0/PCIE20_PERSTN_M0/GPIO0_B5_d
143	LCD_RST_L	GPIO(LCD 复位)	PWM3_M0/GPIO0_A7_d
144	LCD-BL-EN	GPIO(背光)	CLK_32K_IN/CLK0_32K_OUT/PCIE20_BUTTONRSTN/GPIO0_B0_d
145	I2C0_SDA_PMIC	I2C0(RTC)	I2C0_SDA/GPIO0_B2_d
146	I2C0_SCL_PMIC		I2C0_SCL/GPIO0_B1_d
147	TP_RST_L	GPIO(TP 复位)	PCIE20_CLKREQN_M0/GPIO0_A6_d
148	TP_INT_L	GPIO(TP 中断)	REF_CLK_OUT/GPIO0_A0_d
149	USB30_OTG0_VBUSDET	USB3.0 USB2.0 OTG	USB30_OTG0_VBUSDET
150	USB30_OTG0_ID		USB30_OTG0_ID
151	USB30_OTG0_DM		USB30_OTG0_DM
152	USB30_OTG0_DP		USB30_OTG0_DP
153	USB20_HOST1_DM	USB2.0	USB20_HOST1_DM
154	USB20_HOST1_DP		USB20_HOST1_DP
155	USB30_OTG0_SSTXP/PCIE20_TXDP	USB3.0	USB30_OTG0_SSTXP/PCIE20_TXDP
156	USB30_OTG0_SSTXN/PCIE20_TXDN		USB30_OTG0_SSTXN/PCIE20_TXDN
157	PCIE20_REFCLKP	PCIE	PCIE20_REFCLKP
158	PCIE20_REFCLKN		PCIE20_REFCLKN
159	USB30_OTG0_SSRXP/PCIE20_RXDP	USB3.0	USB30_OTG0_SSRXP/PCIE20_RXDP
160	USB30_OTG0_SSRXN/PCIE20_RXDN		USB30_OTG0_SSRXN/PCIE20_RXDN
161	GND	电源地	
162	VCC3V3_SYS	3.3V 电源输入	
T1	SARADC1_IN0	ADC	SARADC1_IN0

T2	SARADC1_IN1		SARADC1_IN1
T3	SARADC1_IN2		SARADC1_IN2
T4	SARADC1_IN4		SARADC1_IN4
T5	SARADC1_IN6		SARADC1_IN6
T6	SARADC1_IN3		SARADC1_IN3
T7	SARADC1_IN7		SARADC1_IN7
T8	SARADC1_IN5		SARADC1_IN5
T9	SARADC0_IN4		SARADC0_IN4
T10	SARADC0_IN5		SARADC0_IN5
T11	SARADC0_IN6		SARADC0_IN6
T12	SARADC0_IN7		SARADC0_IN7
T13	SARADC0_IN3		SARADC0_IN3
T14	SARADC0_IN2		SARADC0_IN2

四、联系方式

总公司：广州佩特电子科技有限公司

总公司地址：广州市天河区大观中路新塘大街鑫盛工业园 A1 栋 201

总公司网站：<http://www.gzpeite.net>

SMT 子公司：广州佩特精密电子科技有限公司（全资子公司）

子公司地址：广州市白云区人和镇大巷村顺景路 11 号

SMT 网站：<http://www.gzptjm.com>

官方淘宝店：<https://shop149045251.taobao.com>

微信扫描二维码联系支持人员：



广州佩特电子科技有限公司

2024 年 12 月