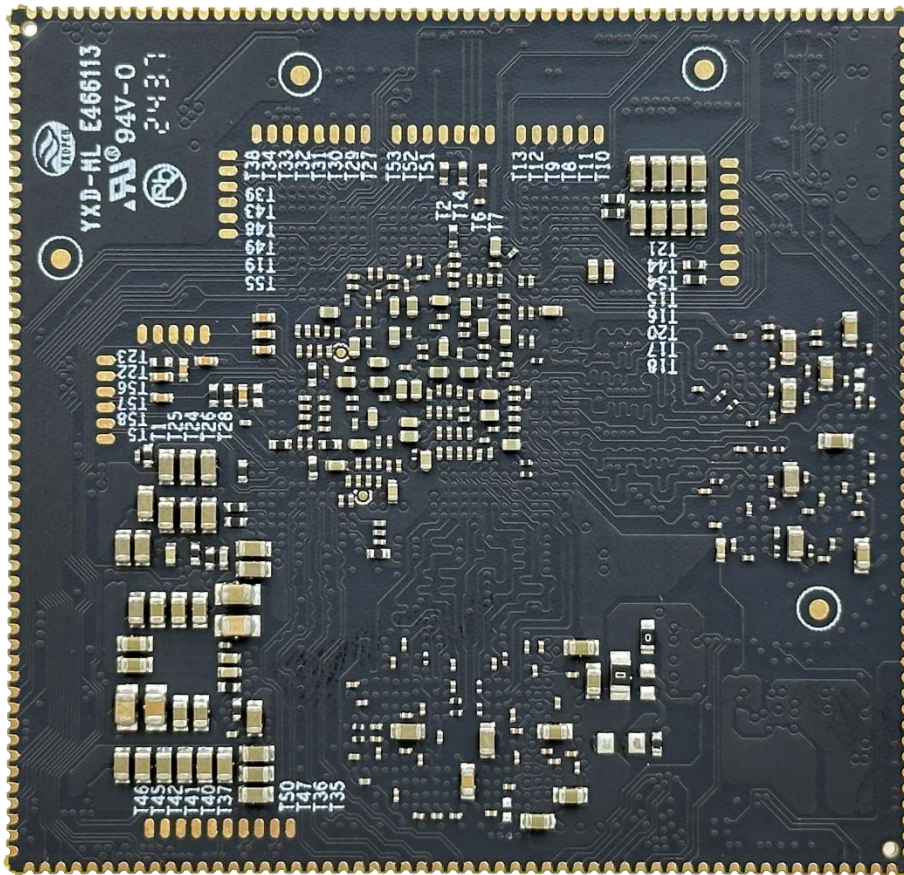
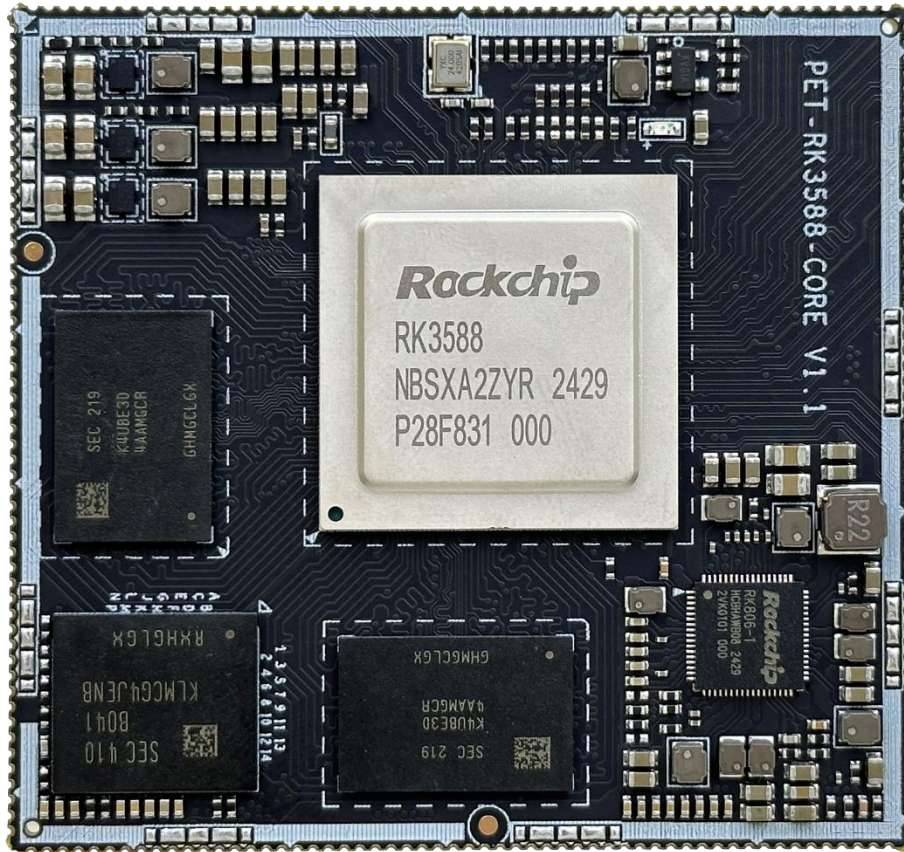
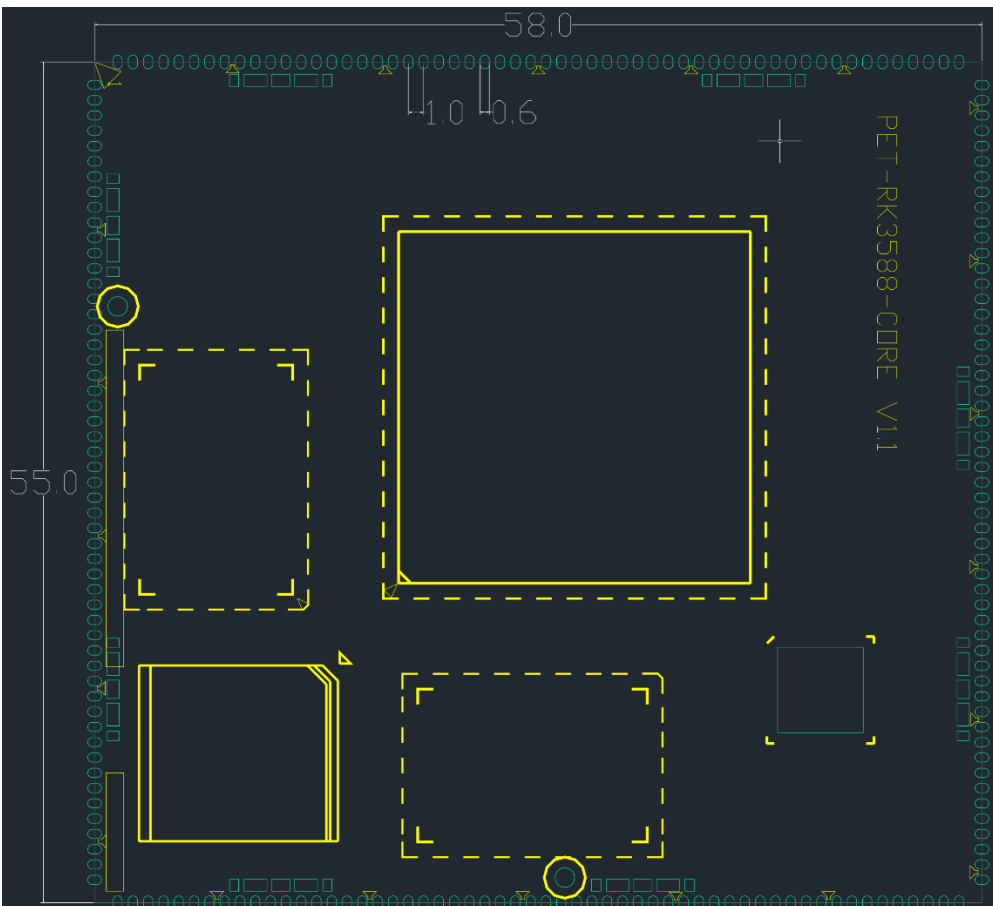
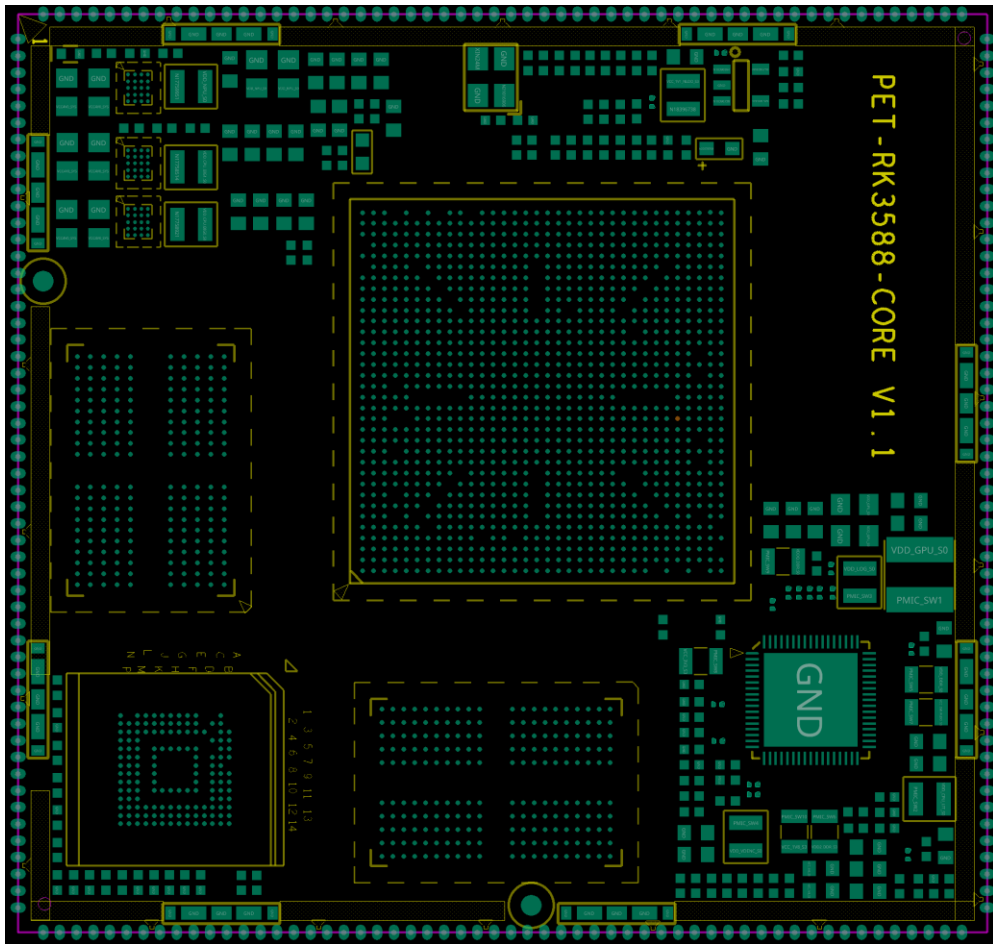




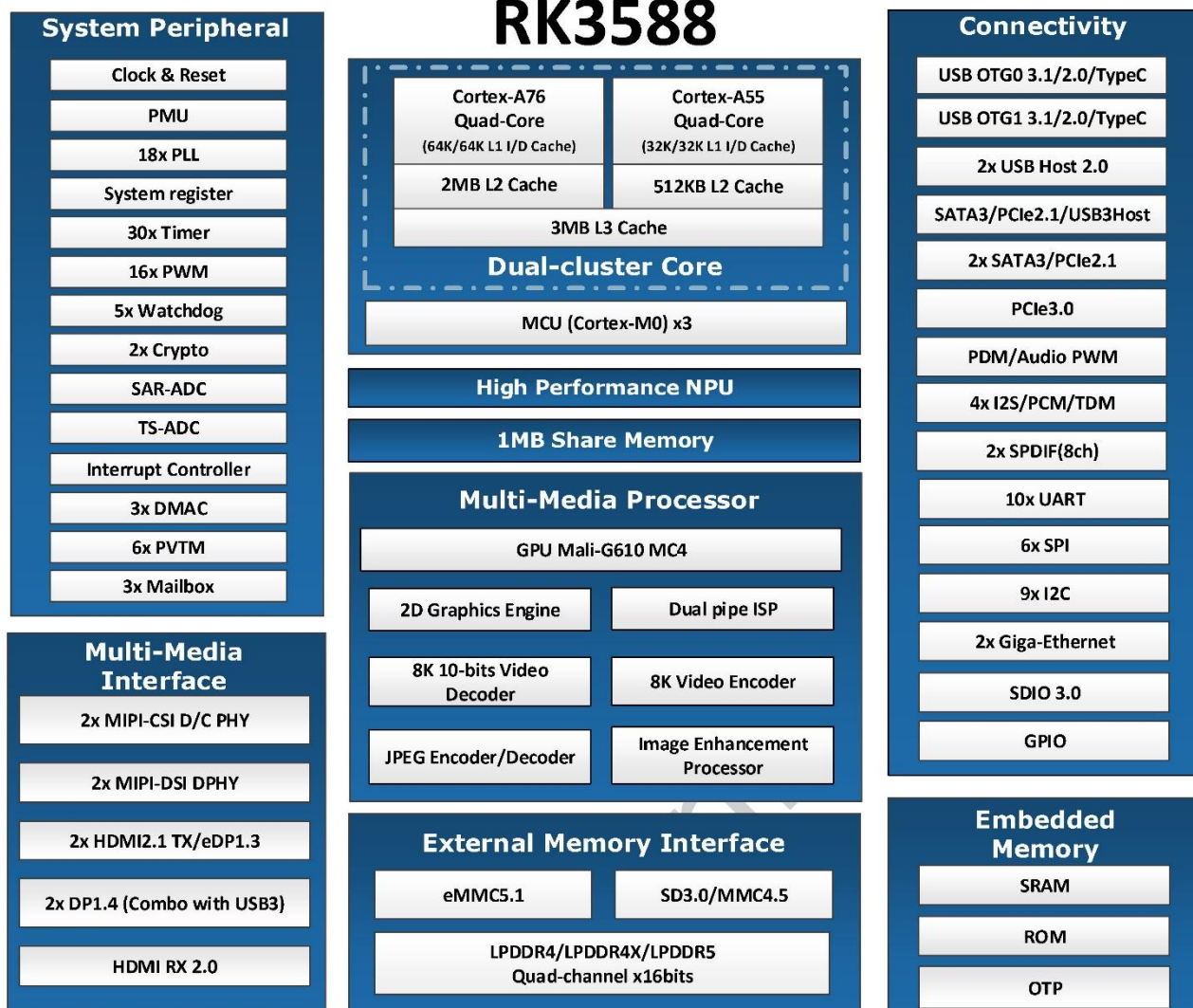
PET_RK3588_CORE 核心板 说明书

一、PET_RK3588_CORE 核心板图片





二、PET_RK3588_CORE 核心板详细参数



PET-RK3588 核心板参数	
处理器	RK3588 八核，四核 Cortex-A76 四核 Cortex-A55，64 位 ARM64，最高主频 2.0G
内置 NPU	RKNN NPU，6TOPS 算力，用于 AI 计算
内置 GPU	ARM Mali-G610 MC4，支持 OpenCL 2.0，OpenGL ES 1.1、2.0、3.2，Vulkan1.2
内置视频编解码	支持 8K@60fps H265 格式硬解码、8K@30fps 硬编码
内存 LPDDR4	4GB / 8GB / 16GB / 32GB，标配 4GB
存储 EMMC	32GB / 64GB / 128GB / 256GB，标配 32GB
操作系统	支持安卓 Android 12、Buildroot Linux、Debian11、Ubuntu 22.04
PET-RK3588 核心板引脚功能	
LVDS 显示输出	双 8 双通道 1920x1080（通过底板 MIPI 转 LVDS 芯片实现），也支持单 8 单通道
eDP 显示输出	支持两个 eDP 显示屏，最大支持分辨率 3840x2160
MIPI 显示输出	支持两个 MIPI 显示屏，最大支持分辨率 3840x2160
HDMI 显示输出	支持两个 HDMI 显示屏，最大支持分辨率 7680x4320
DP 显示输出	支持两个 DP 显示屏，最大支持分辨率 7680x4320
RGB 显示输出	最大支持分辨率 1920x1080

视频输入接口	MIPI CSI 2 路(8 Lane) ， 最大支持 4800 万像素
按键接口	电源键、烧写键、复位键、ADC 按键、GPIO 按键、GPIO 矩阵键盘
千兆以太网接口	2 路
USB 接口	3 路 USB3.0、2 路 USB2.0、OTG 1 路；用于 USB 外设、4G/5G 模组、USB 摄像头等
SDIO 接口	2 路，可用于 TF 卡、WIFI 蓝牙模组等
SPI 接口	5 路
SARADC 接口	8 路，12bit / 1MSPS / 12MHz 频率；用于 ADC 按键、ADC 输入检测，最高电压 1.8V
I2C 接口	9 路，用于电容触摸屏/RTC/NFC/I2C 外设等
UART 串口	10 路
I2S 接口	3 路
PWM 接口	16 路，用于 IR 红外输入、PWM 输出、显示屏背光控制等
CAN 接口	2 路
PCIE3.0 接口	2 路，4 Lane；可用于 M2 电子盘等
PCIE2.1 接口	3 路，2 Lane；可用于 M2 电子盘等
SATA 接口	2 路，可用于 SATA 固态硬盘
看门狗	1 个，CPU 内置
SPDIF 输出	2 路，8 通道
PDM 输入	1 路，8 通道
GPIO/中断	多路
PET-RK3588 核心板结构参数	
尺寸	58 x 55 mm，厚度 1.2mm
邮票孔间距	1.0mm
引脚数	274 pin
PCB 工艺	八层板，沉金工艺

注意：RK3588 引脚大部分是功能复用的，以上列表内的资源存在不能同时使用的情况，引脚功能复用情况可以查询下表或查看我司核心板精简版原理图。

三、PET_RK3588_CORE 核心板引脚详细说明

	名称	SDK 默认功能	CPU 引脚可选配置功能
1	VCC4V0_SYS	4V 电源输入	
2	VCCA_3V3_S0	3.3V 电源输出	
3	VCC_1V8_S0	1.8V 电源输出	
4	VCC_3V3_S3	3.3V 电源输出	
5	VCC_1V8_S3	1.8V 电源输出	
6	GND	电源地	
7	GND	电源地	
8	PCIE30_PORT0_TX0P	M2 电子盘(PCIE)	PCIE30_PORT0_TX0P
9	PCIE30_PORT0_TX0N		PCIE30_PORT0_TX0N
10	PCIE30_PORT0_TX1P		PCIE30_PORT0_TX1P
11	PCIE30_PORT0_TX1N		PCIE30_PORT0_TX1N
12	PCIE30_PORT1_RX2P		PCIE30_PORT1_RX2P
13	PCIE30_PORT1_RX2N		PCIE30_PORT1_RX2N
14	PCIE30_PORT1_RX3P		PCIE30_PORT1_RX3P
15	PCIE30_PORT1_RX3N		PCIE30_PORT1_RX3N
16	PCIE30_PORT1_TX2P		PCIE30_PORT1_TX2P
17	PCIE30_PORT1_TX2N		PCIE30_PORT1_TX2N
18	PCIE30_PORT1_TX3P		PCIE30_PORT1_TX3P
19	PCIE30_PORT1_TX3N		PCIE30_PORT1_TX3N
20	PCIE30_PORT1_REFCLKN_IN		PCIE30_PORT1_REF_CLKN
21	PCIE30_PORT1_REFCLKP_IN		PCIE30_PORT1_REF_CLKP
22	GPIO0_C6_u	GPIO(LCD 复位)	I2S1_SDI1_M1/NPU_AVS/UART0_RTSN/PWM5_M1/SPIO_CLK_M0/PCIE30X4_CLKREQN_M0/SATA_CP_POD /GPIO0_C6_u
23	GPIO0_C5_u	GPIO(LCD 背光)	I2S1_SDI0_M1/GPU_AVS/UART0_TX_M0/I2C4_SCL_M2/DP1_HPDI0_M1/PWM4_M0/PCIE30X1_0_PERSTN_M0/GPIO0_C5_u

24	PWM2_M0	PWM2(LCD)	PDM0_CLK1_M1/PWM2_M0/UART0_RX_M0/I2C4_SDA_M2/DP0_HPDIN_M1/PCIE30X1_0_WAKEN_M0/GPIO0_C4_d
25	GPIO1_C4_d	GPIO(LCD 电源)	PDM0_CLK1_M0/I2C2_SDA_M3/PWM11_IR_M2/SPI4_CS1_M0/GPIO1_C4_d
26	I2C6_SDA_M0_TP	I2C6(触摸屏)	I2S1_SDI2_M1/PDM0_SDI0_M1/I2C6_SDA_M0/UART1_RTSN_M2/PWM6_M0/SPI0_MISO_M0/PCIE30X4_WAKEN_M0/GPIO0_C7_d
27	I2C6_SCL_M0_TP		I2S1_SDI3_M1/PDM0_SDI1_M1/I2C6_SCL_M0/UART1_CTSN_M2/PWM7_IR_M0/SPI3_MISO_M2/PCIE30X4_PERSTN_M0/GPIO0_D0_d
28	GPIO3_C1_d	GPIO(TP 复位)	GMAC1_PPSCCLK/PCIE30X2_BUTTON_RSTN/UART7_RX_M1/SPI1_CLK_M1/GPIO3_C1_d
29	GPIO3_C0_d	GPIO(TP 中断)	GMAC1_PPSTRIG/I2C3_SDA_M1/UART7_TX_M1/SPI1_MISO_M1/GPIO3_C0_d
30	SDIO_D2_M0_WIFI	SDIO(WIFI)	GMAC0_RXCLK/SDIO_D2_M0/FSPI_D2_M1/I2C8_SCL_M1/UART6_RTSN_M0/GPIO2_B0_u
31	SDIO_D1_M0_WIFI		GMAC0_RXD3/SDIO_D1_M0/FSPI_D1_M1/UART6_TX_M0/GPIO2_A7_u
32	SDIO_D0_M0_WIFI		GMAC0_RXD2/SDIO_D0_M0/FSPI_D0_M1/UART6_RX_M0/GPIO2_A6_u
33	SDIO_CLK_M0_WIFI		GMAC0_TXCLK/SDIO_CLK_M0/FSPI_CLK_M1/I2C3_SDA_M3/GPIO2_B3_d
34	SDIO_D3_M0_WIFI		GMAC0_TXD2/SDIO_D3_M0/FSPI_D3_M1/I2C8_SDA_M1/UART6_CTSN_M0/GPIO2_B1_u
35	SDIO_CMD_M0_WIFI		GMAC0_TXD3/SDIO_CMD_M0/I2C3_SCL_M3/GPIO2_B2_u
36	WIFI_REG_ON_H	GPIO(WIFI 开关)	CLK32K_OUT1/GPIO2_C5_d
37	GPIO4_C3_d	GPIO	GMAC0_MCLKINOUT/I2S2_SDO_M0/I2C7_SCL_M1/PWM4_M1/SPI3_CS1_M0/GPIO4_C3_d
38	GPIO2_C3_d	GPIO	ETH0_REFCKO_25M/I2S2_SDI_M0/I2C6_SCL_M2/SPI1_CS0_M0/GPIO2_C3_d
39	GPIO2_C0_d	GPIO	GMAC0_TXEN/I2S2_LRCK_M0/I2C2_SDA_M1/UART1_RTSN_M0/SPI1_CLK_M0/GPIO2_C0_d
40	GPIO2_B5_u	GPIO(唤醒 BT)	GMAC0_PPSTRING/FSPI_CS1N_M1/HDMI_TX1_SCL_M0/I2C4_SCL_M1/UART7_TX_M0/GPIO2_B5_u
41	GPIO1_A7_u	GPIO(4G 复位)	PDM1_SDI0_M1/PCIE30X1_1_PERSTN_M2/PWM3_IR_M3/SPI2_CS0_M0/GPIO1_A7_u
42	UART9_RX_M0_BT	UART9(BT)	GMAC0_PPSCCLK/TEST_CLKOUT_M1/HDMI_TX1_CEC_M0/UART9_RX_M0/SPI1_CS1_M0/GPIO2_C4_d
43	UART9_TX_M0_BT		GMAC0_RXD1/I2C6_SDA_M2/UART9_TX_M0/SPI1_MOSI_M0/GPIO2_C2_d
44	UART9_RTSn_M0_BT		GMAC0_MDC/I2C7_SDA_M1/UART9_RTSN_M0/PWM5_M2/SPI3_MISO_M0/GPIO4_C4_d
45	UART9_CTSn_M0_BT		GMAC0_MDIO/I2C0_SCL_M1/UART9_CTSN_M0/PWM6_M2/SPI3_MOSI_M0/GPIO4_C5_d
46	GPIO2_B6_d	UART1	GMAC0_TXD0/I2S2_MCLK_M0/I2C5_SCL_M4/UART1_RX_M0/GPIO2_B6_d
47	GPIO2_B7_d		GMAC0_TXD1/I2S2_SCLK_M0/I2C5_SDA_M4/UART1_TX_M0/GPIO2_B7_d
48	UART2_RX_M0_DEBUG	UART2 调试串口	I2S1_SCLK_M1/JTAG_TMS_M2/I2C1_SDA_M0/UART2_RX_M0/PCIE30X1_1_WAKEN_M0/GPIO0_B6_d

49	UART2_TX_M0_DEBUG	UART2 调试串口	I2S1_MCLK_M1/JTAG_TCK_M2/I2C1_SCL_M0/UART2_TX_M0/PCIE30X1_1_CLKREQN_M0/GPIO0_B5_d
50	GPIO1_D2_d	UART4	I2S0_SDO3/I2S0_SDI2/PDM0_SDI2_M0/I2C1_SCL_M4/UART4_TX_M0/PWM0_M1/SPI1_CLK_M2/GPIO1_D2_d
51	GPIO1_D3_d		I2S0_SDI1/PDM0_SDI3_M0/I2C1_SDA_M4/UART4_RX_M0/PWM1_M1/SPI1_CS0_M2/GPIO1_D3_d
52	GPIO1_B4_u	UART7	PDM1_CLK0_M1/PCIE30X1_0_PERSTN_M2/UART7_RX_M2/SPI0_CS0_M2/GPIO1_B4_u
53	GPIO1_B5_u		PCIE30X1_0_CLKREQN_M2/UART7_TX_M2/SPI0_CS1_M2/GPIO1_B5_u
54	GPIO1_A0_d	UART6	PCIE30X1_1_CLKREQN_M2/DP0_HPDIN_M2/I2C2_SDA_M4/UART6_RX_M1/SPI4_MISO_M2/GPIO1_A0_d
55	GPIO1_A1_d		PCIE30X1_1_WAKEN_M2/DP1_HPDIN_M2/SATA1_ACT_LED_M1/I2C2_SCL_M4/UART6_TX_M1/SPI4_MOSI_M2/GPIO1_A1_d
56	GPIO1_A2_d	GPIO(NFC)	VOP_POST_EMPTY/I2C4_SDA_M3/UART6_RTSN_M1/PWM0_M2/SPI4_CLK_M2/GPIO1_A2_d
57	GPIO1_A3_d	GPIO(NFC)	HDMI_TX1_SDA_M2/I2C4_SCL_M3/UART6_CTSN_M1/PWM1_M2/SPI4_CS0_M2/GPIO1_A3_d
58	I2C7_SDA_M0_CODEC	I2C7(CODEC)	I2S0_SDO2/I2S0_SDI3/PDM0_SDI1_M0/I2C7_SDA_M0/UART6_RX_M2/SPI1_MOSI_M2/GPIO1_D1_d
59	I2C7_SCL_M0_CODEC		I2S0_SDO1/I2C7_SCL_M0/UART6_TX_M2/SPI1_MISO_M2/GPIO1_D0_d
60	I2S0_MCLK	I2S0(CODEC)	I2S0_MCLK/I2C6_SDA_M1/UART3_RTSN/PWM3_IR_M2/SPI4_CLK_M0/GPIO1_C2_d
61	I2S0_SCLK_TX		I2S0_SCLK/I2C6_SCL_M1/UART3_CTSN/PWM7_IR_M2/SPI4_CS0_M0/GPIO1_C3_d
62	I2S0_LRCK_TX		I2S0_LRCK/I2C2_SCL_M3/UART4_RTSN/GPIO1_C5_d
63	I2S0_SDO0		I2S0_SDO0/I2C4_SCL_M4/UART4_CTSN/GPIO1_C7_d
64	I2S0_SDI0		I2S0_SDI0/GPIO1_D4_d
65	GPIO1_B3_d	GPIO(喇叭)	PDM1_CLK1_M1/PCIE30X1_0_WAKEN_M2/SATA0_ACT_LED_M1/UART4_TX_M2/SPI0_CLK_M2/GPIO1_B3_d
66	GND	电源地	
67	RTC_INT_L	GPIO(RTC)	I2S1_SDO2_M1/PDM0_SDI2_M1/PWM3_IR_M0/I2C1_SCL_M2/HDMI_TX0_SDA_M1/SPI3_CS0_M2/PCIE30X2_PERSTN_M0/SATA_CPDET/GPIO0_D4_u
68	RTC_32K_IN	32.768K 输入	CLK32K_IN/CLK32K_OUT0/GPIO0_B2_u
69	SDMMC_DET_L	SDMMC0(TF 卡)	SDMMC_DET/GPIO0_A4_u
70	SDMMC0_D1		SDMMC_D1/PDM1_SDI2_M0/JTAG_TMS_M1/I2C3_SDA_M4/UART2_RX_M1/PWM9_M1/GPIO4_D1_u
71	SDMMC0_D0		SDMMC_D0/PDM1_SDI3_M0/JTAG_TCK_M1/I2C3_SCL_M4/UART2_TX_M1/PWM8_M1/GPIO4_D0_u
72	SD_CLK		SDMMC_CLK/PDM1_CLK0_M0/TEST_CLKOUT_M0/MCU_JTAG_TMS_M0/UART5_TX_M0/CAN0_RX_M1/GPIO4_D5_d

73	SDMMC0_CMD	SDMMC0(TF 卡)	SDMMC_CMD/PDM1_CLK1_M0/MCU_JTAG_TCK_M0/UART5_RX_M0/PWM7_IR_M1/CAN0_TX_M1/GPIO4_D4_u
74	SDMMC0_D3	SDMMC0(TF 卡)	SDMMC_D3/PDM1_SDI0_M0/JTAG_TMS_M0/I2C8_SDA_M0/UART5_RTSN_M0/PWM10_M1/GPIO4_D3_u
75	SDMMC0_D2		SDMMC_D2/PDM1_SDI1_M0/JTAG_TCK_M0/I2C8_SCL_M0/UART5_CTSN_M0/GPIO4_D2_u
76	GPIO0_D5_u	GPIO(HDMI 输入)	I2S1_SDO3_M1/CPU_BIG1_AVS/I2C1_SDA_M2/HDMI_TX0_SCL_M1/SPI3_CS1_M2/SATA_MP_SWITCH/GPIO0_D5_u
77	HDMIIRX_HPDPDOUT_H	HDMI 输入	HDMI_TX0_HPD_M1/PCIE30X2_PERSTN_M2/HDMI_RX_HPDPIN_M1/MCU_JTAG_TCK_M1/UART9_RX_M2/SPI0_CS0_M3/GPIO3_D4_d
78	HDMI_RX_SDA_M1		CIF_D15/PCIE30X2_WAKEN_M2/HDMI_RX_SDA_M1/I2C7_SDA_M2/UART9_CTSN_M2/PWM10_M2/SPI0_CLK_M3/GPIO3_D3_d
79	HDMI_RX_SCL_M1		CIF_D14/PCIE30X2_CLKREQN_M2/HDMI_RX_SCL_M1/I2C7_SCL_M2/UART9_RTSN_M2/SPI0_MOSI_M3/GPIO3_D2_d
80	HDMI_RX_CEC		BT1120_D11/PCIE30X4_WAKEN_M1/HDMI_RX_CEC_M0/SATA1_ACT_LED_M0/UART9_RX_M1/PWM12_M1/SPI3_MISO_M1/GPIO4_B5_d
81	HDMI_RX_CLKN		HDMI_RX_CLKN
82	HDMI_RX_CLKP		HDMI_RX_CLKP
83	HDMI_RX_D0N		HDMI_RX_D0N
84	HDMI_RX_D0P		HDMI_RX_D0P
85	HDMI_RX_D1N		HDMI_RX_D1N
86	HDMI_RX_D1P		HDMI_RX_D1P
87	HDMI_RX_D2N		HDMI_RX_D2N
88	HDMI_RX_D2P		HDMI_RX_D2P
89	GND	电源地	
90	HDMI0_TX_SBDN/eDP0_TX_AUXN	eDP 显示屏	HDMI_TX0_SBDN/eDP_TX0_AUXN
91	HDMI0_TX_SBDP/eDP0_TX_AUXP		HDMI_TX0_SBDP/eDP_TX0_AUXP
92	HDMI0_TX3N_PORT/eDP0_TX_D3N		HDMI_TX0_D3N/eDP_TX0_D3N
93	HDMI0_TX3P_PORT/eDP0_TX_D3P		HDMI_TX0_D3P/eDP_TX0_D3P
94	HDMI0_TX0N_PORT/eDP0_TX_D0N		HDMI_TX0_D0N/eDP_TX0_D0N

95	HDMI0_TX0P_PORT/eDP0_TX_D0P	eDP 显示屏	HDMI_TX0_D0P/eDP_TX0_D0P
96	HDMI0_TX1N_PORT/eDP0_TX_D1N		HDMI_TX0_D1N/eDP_TX0_D1N
97	HDMI0_TX1P_PORT/eDP0_TX_D1P		HDMI_TX0_D1P/eDP_TX0_D1P
98	HDMI0_TX2N_PORT/eDP0_TX_D2N		HDMI_TX0_D2N/eDP_TX0_D2N
99	HDMI0_TX2P_PORT/eDP0_TX_D2P		HDMI_TX0_D2P/eDP_TX0_D2P
100	HDMI0_TX_ON_H	HDMI 输出	MIPI_CAMERA0_CLK_M0/SPDIF1_TX_M1/I2S1_SDO0_M0/PCIE30X1_0_BUTTON_RSTN/SATA2_ACT_LED_M0/I2C6_SCL_M3/UART8_RX_M0/SPI0_CS1_M1/GPIO4_B1_u
101	GPIO1_A5_d		HDMI_TX0_HPD_M0/SPI2_MOSI_M0/GPIO1_A5_d
102	HDMITX0_SDA_M0		BT1120_D14/PCIE20X1_2_WAKEN_M1/HDMI_TX0_SDA_M0/I2C8_SCL_M3/SPI3_CS0_M1/GPIO4_C0_u
103	HDMITX0_SCL_M0		BT1120_D13/PCIE20X1_2_CLKREQN_M1/HDMI_TX0_SCL_M0/I2C5_SDA_M1/SPI3_CLK_M1/GPIO4_B7_u
104	HDMITX0_CEC_M0		BT1120_D15/SPDIF1_TX_M2/PCIE20X1_2_PERSTN_M1/HDMI_TX0_CEC_M0/I2C8_SDA_M3/PWM6_M1/SPI3_CS1_M1/GPIO4_C1_d
105	PMIC_VDC	上电开机信号输入	
106	PWRON_L	电源键	
107	BOOT_SARADC_IN0	ROM 键	SARADC_IN0_BOOT
108	GPIO0_D3_u	GPIO(指示灯)	LITCPU_AV5/SPI3_CLK_M2/GPIO0_D3_u
109	GPIO4_B3_u/CAN1_TX	CAN1	CIF_VSYNC/BT1120_D9/I2S1_SDO2_M0/PCIE20X1_2_BUTTON_RSTN/I2C7_SDA_M3/UART8_CTSN_M0/PWM15_IR_M1/GPIO4_B3_u
110	GPIO4_B2_u/CAN1_RX		CIF_HREF/BT1120_D8/I2S1_SDO1_M0/PCIE30X1_1_BUTTON_RSTN/I2C7_SCL_M3/UART8_RTSN_M0/PWM14_M1/SPI0_CS0_M1/GPIO4_B2_u
111	GPIO3_D0_d	I2C5(NFC)	CIF_D12/PCIE20X1_2_WAKEN_M0/HDMI_TX0_SDA_M2/I2C5_SDA_M0/UART4_RX_M1/PWM8_M2/SPI3_CLK_M3/GPIO3_D0_u
112	GPIO3_C7_d		CIF_D11/PCIE20X1_2_CLKREQN_M0/HDMI_TX0_SCL_M2/I2C5_SCL_M0/SPI3_MOSI_M3/GPIO3_C7_u
113	GPIO4_B5_u	TYPEC0	BT1120_D11/PCIE30X4_WAKEN_M1/HDMI_RX_CEC_M0/SATA1_ACT_LED_M0/UART9_RX_M1/PWM12_M1/SPI3_MISO_M1/GPIO4_B5_d
114	GPIO4_B6_d		BT1120_D12/PCIE30X4_PERSTN_M1/HDMI_RX_HPDIN_M0/SATA0_ACT_LED_M0/I2C5_SCL_M1/PWM13_M1/SPI3_MOSI_M1/GPIO4_B6_d
115	GPIO4_C2_d		GMAC0_RXDV_CR5/UART7_RTSN_M0/PWM2_M2/SPI3_CS0_M0/GPIO4_C2_d

116	GPIO4_B4_u	TYPEC0	CIF_CLKOUT/BT1120_D10/I2S1_SDO3_M0/PCIE30X4_CLKREQN_M1/DP0_HPDIN_M0/SPDIF0_TX_M1/UAR T9_TX_M1/PWM11_IR_M1/GPIO4_B4_u
117	RESET_L	复位键	
118	GPIO4_A5_d	GPIO	CIF_D5/BT1120_D5/I2S1_SDI0_M0/PCIE30X1_0_PERSTN_M1/I2C3_SDA_M2/UART3_TX_M2/SPI2_MOSI_M1 /GPIO4_A5_d
119	GPIO4_A6_d	GPIO	CIF_D6/BT1120_D6/I2S1_SDI1_M0/PCIE30X2_CLKREQN_M1/I2C5_SCL_M2/UART3_RX_M2/SPI2_CLK_M1/G PIO4_A6_d
120	GPIO4_A7_d	GPIO	CIF_D7/BT1120_D7/I2S1_SDI2_M0/PCIE30X2_WAKEN_M1/I2C5_SDA_M2/SPI2_CS0_M1/GPIO4_A7_d
121	GPIO4_A4_d	GPIO	CIF_D4/BT1120_D4/PCIE30X1_0_WAKEN_M1/I2C3_SCL_M2/UART0_RX_M2/SPI2_MISO_M1/GPIO4_A4_d
122	GPIO4_A3_d	GPIO	CIF_D3/BT1120_D3/PCIE30X1_0_CLKREQN_M1/UART0_TX_M2/GPIO4_A3_d
123	GND	电源地	
124	TYPEC1_USB20_VBUSDET		TYPEC1_USB20_VBUSDET
125	TYPEC1_USB20_OTG_ID		TYPEC1_USB20_OTG_ID
126	TYPEC1_OTG_DM	USB2.0	TYPEC1_USB20_OTG_DM
127	TYPEC1_OTG_DP		TYPEC1_USB20_OTG_DP
128	TYPEC1_SBU1	DP 显示屏	TYPEC1_SBU1/DP1_AUXP
129	TYPEC1_SBU2		TYPEC1_SBU2/DP1_AUXN
130	TYPEC1_SSRX1N		TYPEC1_SSRX1N/DP1_TX0N
131	TYPEC1_SSRX1P		TYPEC1_SSRX1P/DP1_TX0P
132	TYPEC1_SSTX1P		TYPEC1_SSTX1P/DP1_TX1P
133	TYPEC1_SSTX1N		TYPEC1_SSTX1N/DP1_TX1N
134	TYPEC1_SSRX2N		TYPEC1_SSRX2N/DP1_TX2N
135	TYPEC1_SSRX2P		TYPEC1_SSRX2P/DP1_TX2P
136	TYPEC1_SSTX2P		TYPEC1_SSTX2P/DP1_TX3P
137	TYPEC1_SSTX2N		TYPEC1_SSTX2N/DP1_TX3N
138	TYPEC0_OTG_DM	TYPEC0	TYPEC0_USB20_OTG_DM
139	TYPEC0_OTG_DP		TYPEC0_USB20_OTG_DP
140	TYPEC0_USB20_OTG_ID		TYPEC0_USB20_OTG_ID

141	TYPECO_USB20_VBUSDET	TYPECO	TYPECO_USB20_VBUSDET
142	TYPECO_SBU1		TYPECO_SBU1/DP0_AUXP
143	TYPECO_SBU2		TYPECO_SBU2/DP0_AUXN
144	TYPECO_SSRX1N		TYPECO_SSRX1N/DP0_TX0N
145	TYPECO_SSRX1P		TYPECO_SSRX1P/DP0_TX0P
146	TYPECO_SSTX1P		TYPECO_SSTX1P/DP0_TX1P
147	TYPECO_SSTX1N		TYPECO_SSTX1N/DP0_TX1N
148	TYPECO_SSRX2N		TYPECO_SSRX2N/DP0_TX2N
149	TYPECO_SSRX2P		TYPECO_SSRX2P/DP0_TX2P
150	TYPECO_SSTX2P		TYPECO_SSTX2P/DP0_TX3P
151	TYPECO_SSTX2N		TYPECO_SSTX2N/DP0_TX3N
152	GND	电源地	
153	MIPI_DPHY1_TX_D0N	MIPI 显示屏 1	MIPI_DPHY1_TX_D0N/MIPI_CPHY1_TX_TRIO0_A
154	MIPI_DPHY1_TX_D0P		MIPI_DPHY1_TX_D0P/MIPI_CPHY1_TX_TRIO0_B
155	MIPI_DPHY1_TX_D1N		MIPI_DPHY1_TX_D1N/MIPI_CPHY1_TX_TRIO0_C
156	MIPI_DPHY1_TX_D1P		MIPI_DPHY1_TX_D1P/MIPI_CPHY1_TX_TRIO1_A
157	MIPI_DPHY1_TX_CLKN		MIPI_DPHY1_TX_CLKN/MIPI_CPHY1_TX_TRIO1_B
158	MIPI_DPHY1_TX_CLKP		MIPI_DPHY1_TX_CLKP/MIPI_CPHY1_TX_TRIO1_C
159	MIPI_DPHY1_TX_D2N		MIPI_DPHY1_TX_D2N/MIPI_CPHY1_TX_TRIO2_A
160	MIPI_DPHY1_TX_D2P		MIPI_DPHY1_TX_D2P/MIPI_CPHY1_TX_TRIO2_B
161	MIPI_DPHY1_TX_D3N		MIPI_DPHY1_TX_D3N/MIPI_CPHY1_TX_TRIO2_C
162	MIPI_DPHY1_TX_D3P	MIPI_DPHY1_TX_D3P/NO_USE	
163	GND	电源地	
164	MIPI_DPHY0_TX_D0N	MIPI 显示屏	MIPI_DPHY0_TX_D0N/MIPI_CPHY0_TX_TRIO0_A
165	MIPI_DPHY0_TX_D0P		MIPI_DPHY0_TX_D0P/MIPI_CPHY0_TX_TRIO0_B
166	MIPI_DPHY0_TX_D1N		MIPI_DPHY0_TX_D1N/MIPI_CPHY0_TX_TRIO0_C
167	MIPI_DPHY0_TX_D1P		MIPI_DPHY0_TX_D1P/MIPI_CPHY0_TX_TRIO1_A
168	MIPI_DPHY0_TX_CLKN		MIPI_DPHY0_TX_CLKN/MIPI_CPHY0_TX_TRIO1_B

169	MIPI_DPHY0_TX_CLKP	MIPI 显示屏 0	MIPI_DPHY0_TX_CLKP/MIPI_CPHY0_TX_TRIO1_C
170	MIPI_DPHY0_TX_D2N		MIPI_DPHY0_TX_D2N/MIPI_CPHY0_TX_TRIO2_A
171	MIPI_DPHY0_TX_D2P		MIPI_DPHY0_TX_D2P/MIPI_CPHY0_TX_TRIO2_B
172	MIPI_DPHY0_TX_D3N		MIPI_DPHY0_TX_D3N/MIPI_CPHY0_TX_TRIO2_C
173	MIPI_DPHY0_TX_D3P		MIPI_DPHY0_TX_D3P/NO_USE
174	GND	电源地	
175	GMAC1_RXDV_CRS	GMAC 千兆以太网	GMAC1_RXDV_CRS/MIPI_CAMERA4_CLK_M1/UART2_TX_M2/PWM2_M1/GPIO3_B1_d
176	GMAC1_RXD0		GMAC1_RXD0/MIPI_CAMERA2_CLK_M1/PWM8_M0/GPIO3_A7_u
177	GMAC1_RXCLK		GMAC1_RXCLK/SDIO_CLK_M1/MIPI_CAMERA0_CLK_M1/FSPI_CLK_M2/I2C4_SDA_M0/UART8_CTSN_M1/GPIO3_A5_d
178	GMAC1_RXD3		GMAC1_RXD3/SDIO_D3_M1/I2S3_SDO/AUDDSM_RN/FSPI_D3_M2/UART8_RX_M1/SPI4_CS0_M1/GPIO3_A3_u
179	GMAC1_RXD2		GMAC1_RXD2/SDIO_D2_M1/I2S3_LRCK/AUDDSM_LP/FSPI_D2_M2/UART8_TX_M1/SPI4_CLK_M1/GPIO3_A2_u
180	GMAC1_RXD1		GMAC1_RXD1/MIPI_CAMERA3_CLK_M1/PWM9_M0/GPIO3_B0_u
181	GMAC1_TXCLK		GMAC1_TXCLK/SDIO_CMD_M1/I2S3_SDI/AUDDSM_RP/UART8_RTSN_M1/SPI4_CS1_M1/GPIO3_A4_d
182	GMAC1_TXD3		GMAC1_TXD3/SDIO_D1_M1/I2S3_SCLK/AUDDSM_LN/FSPI_D1_M2/I2C6_SCL_M4/PWM11_IR_M0/SPI4_MOSI_M1/GPIO3_A1_u
183	GMAC1_TXD2		GMAC1_TXD2/SDIO_D0_M1/I2S3_MCLK/FSPI_D0_M2/I2C6_SDA_M4/PWM10_M0/SPI4_MISO_M1/GPIO3_A0_u
184	GMAC1_TXD1		GMAC1_TXD1/I2S2_MCLK_M1/UART2_CTSN/GPIO3_B4_u
185	GMAC1_TXD0		GMAC1_TXD0/I2S2_SDO_M1/UART2_RTSN/GPIO3_B3_u
186	GMAC1_TXEN		GMAC1_TXEN/I2S2_SCLK_M1/UART3_TX_M1/PWM12_M0/GPIO3_B5_u
187	ETH1_REFCLKO_25M		ETH1_REFCLKO_25M/MIPI_CAMERA1_CLK_M1/I2C4_SCL_M0/GPIO3_A6_d
188	GMAC1_MCLKINOUT		GMAC1_MCLKINOUT/I2S2_LRCK_M1/UART3_RX_M1/PWM13_M0/GPIO3_B6_d
189	GMAC1_MDC		GMAC1_MDC/MIPI_TE0/I2C8_SCL_M4/UART7_RTSN_M1/PWM14_M0/SPI1_CS0_M1/GPIO3_C2_d
190	GMAC1_MDIO	GMAC1_MDIO/MIPI_TE1/I2C8_SDA_M4/UART7_CTSN_M1/PWM15_IR_M0/SPI1_CS1_M1/GPIO3_C3_d	
191	GMAC1_RSTn_L	GPIO(GMAC)	GMAC1_PTP_REF_CLK/HDMI_TX1_HPD_M1/I2C3_SCL_M1/SPI1_MOSI_M1/GPIO3_B7_d

192	GPIO1_A4_d	GPIO(PCIE)	HDMI_TX1_SCL_M2/SPI2_MISO_M0/GPIO1_A4_d
193	GPIO4_B0_d	GPIO	CIF_CLKIN/BT1120_CLKOUT/I2S1_SDI3_M0/PCIE30X2_PERSTN_M1/I2C6_SDA_M3/UART8_TX_M0/SPI2_CS1_M1/GPIO4_B0_d
194	GPIO2_B4_u	GPIO(BT 开关)	GMAC0_PTP_REFCLK/FSPI_CS0N_M1/HDMI_TX1_SDA_M0/I2C4_SDA_M1/UART7_RX_M0/GPIO2_B4_u
195	GPIO2_C1_d	GPIO(NFC)	GMAC0_RXD0/I2C2_SCL_M1/UART1_CTSN_M0/SPI1_MISO_M0/GPIO2_C1_d
196	PCIE20_0_RXP/SATA30_0_RXP	SATA 固态硬盘	PCIE20_0_RXP/SATA30_0_RXP
197	PCIE20_0_RXN/SATA30_0_RXN		PCIE20_0_RXN/SATA30_0_RXN
198	PCIE20_0_TXN/SATA30_0_TXN		PCIE20_0_TXN/SATA30_0_TXN
199	PCIE20_0_TXP/SATA30_0_TXP		PCIE20_0_TXP/SATA30_0_TXP
200	PCIE20_0_REFCLKP		PCIE20_0_REFCLKP
201	PCIE20_0_REFCLKN		PCIE20_0_REFCLKN
202	PCIE20_2_RXN/USB30_2_SSRXN	USB3.0	PCIE20_2_RXN/SATA30_2_RXN/USB30_SSRXN
203	PCIE20_2_RXP/USB30_2_SSRXP		PCIE20_2_RXP/SATA30_2_RXP/USB30_SSRXP
204	PCIE20_2_TXN/USB30_2_SSTXN		PCIE20_2_TXN/SATA30_2_TXN/USB30_SSTXN
205	PCIE20_2_TXP/USB30_2_SSTXP		PCIE20_2_TXP/SATA30_2_TXP/USB30_SSTXP
206	PCIE20_2_REFCLKN		PCIE20_2_REFCLKN
207	PCIE20_2_REFCLKP		PCIE20_2_REFCLKP
208	GPIO1_D5_d	GPIO(耳机插入)	PDM0_SDI0_M0/SPI1_CS1_M2/GPIO1_D5_d
209	GPIO3_D5_d	GPIO(PCIE 电源)	PCIE30X4_BUTTON_RSTN/DP1_HPDIN_M0/MCU_JTAG_TMS_M1/UART9_TX_M2/PWM11_IR_M3/SPI0_CS1_M3/GPIO3_D5_d
210	PCIE30X4_CLKREQn_M3_L	M2 电子盘	PDM1_SDI1_M1/PCIE30X4_CLKREQN_M3/SPI2_CS1_M0/GPIO1_B0_u
211	PCIE30X4_PERSTn_M3_L		PDM1_SDI3_M1/PCIE30X4_PERSTN_M3/UART4_RX_M2/SPI0_MOSI_M2/GPIO1_B2_d
212	PCIE30X4_WAKEn_M3_L		PDM1_SDI2_M1/PCIE30X4_WAKEN_M3/SPI0_MISO_M2/GPIO1_B1_d
213	PCIE30_PORT0_RX0P		PCIE30_PORT0_RX0P
214	PCIE30_PORT0_RX0N		PCIE30_PORT0_RX0N
215	PCIE30_PORT0_RX1P		PCIE30_PORT0_RX1P
216	PCIE30_PORT0_RX1N		PCIE30_PORT0_RX1N
217	PCIE30_PORT0_REFCLKP_IN		PCIE30_PORT0_REF_CLKP

T18	PCIE30_PORT0_REFCLKN_IN	M2 电子盘	PCIE30_PORT0_REF_CLKN
T1	SARADC7	ADC	SARADC_IN7
T2	GPIO0_B0_z	GPIO(散热风扇)	SPI2_CS1_M2/I2C1_SCL_M1/UART0_RX_M1/GPIO0_B0_z
T5	USB20_HOST0_DP	USB2.0	USB20_HOST0_DP
T6	PCIEX1_1_WAKEn_M1_L	PCIE 千兆以太网	CIF_D1/BT1120_D1/I2S1_SCLK_M0/PCIE30X1_1_WAKEN_M1/UART9_CTSN_M1/SPI0_MOSI_M1/GPIO4_A1
T7	PCIEX1_1_PERSTn_M1_L		CIF_D2/BT1120_D2/I2S1_LRCK_M0/PCIE30X1_1_PERSTN_M1/SPI0_CLK_M1/GPIO4_A2_d
T8	PCIE20_1_RXN/SATA30_1_RXN		PCIE20_1_RXN/SATA30_1_RXN
T9	PCIE20_1_RXP/SATA30_1_RXP		PCIE20_1_RXP/SATA30_1_RXP
T10	PCIE20_1_REFCLKN		PCIE20_1_REFCLKN
T11	PCIE20_1_REFCLKP		PCIE20_1_REFCLKP
T12	PCIE20_1_TXN/SATA30_1_TXN		PCIE20_1_TXN/SATA30_1_TXN
T13	PCIE20_1_TXP/SATA30_1_TXP		PCIE20_1_TXP/SATA30_1_TXP
T14	PCIEX1_1_CLKREQn_M1_L		CIF_D0/BT1120_D0/I2S1_MCLK_M0/PCIE30X1_1_CLKREQN_M1/UART9_RTSN_M1/SPI0_MISO_M1/GPIO4_A0_d
T15	MIPI_CAM1_CLKOUT		GPIO(摄像头)
T16	MIPI_CAM2_CLKOUT	GPIO(摄像头)	MIPI_CAMERA2_CLK_M0/SPDIF1_TX_M0/PCIE30X2_PERSTN_M3/HDMI_RX_CEC_M2/SATA2_ACT_LED_M1/I2C5_SDA_M3/UART1_RX_M1/PWM13_M2/GPIO1_B7_u
T17	I2C3_SDA_M0_MIPI	I2C3(摄像头)	I2C3_SDA_M0/UART3_RX_M0/SPI4_MISO_M0/GPIO1_C0_z
T18	I2C3_SCL_M0_MIPI		I2C3_SCL_M0/UART3_TX_M0/SPI4_MOSI_M0/GPIO1_C1_z
T19	GPIO4_C6_d	GPIO(摄像头)	GMAC0_TXER/I2C0_SDA_M1/UART7_CTSN_M0/PWM7_IR_M3/SPI3_CLK_M0/GPIO4_C6_d
T20	GPIO1_C6_d	GPIO(摄像头)	PDM0_CLK0_M0/I2C4_SDA_M4/PWM15_IR_M2/GPIO1_C6_d
T21	MIPI_CAM4_CLKOUT	时钟输出(摄像头)	MIPI_CAMERA4_CLK_M0/PCIE30X2_CLKREQN_M3/HDMI_RX_SDA_M2/I2C8_SDA_M2/UART1_CTSN_M1/PWM15_IR_M3/GPIO1_D7_u
T22	SARADC_VIN1_KEY/RECOVERY	烧写键	SARADC_IN1
T23	SARADC2	ADC	SARADC_IN2
T24	SARADC3	ADC	SARADC_IN3
T25	SARADC4	ADC	SARADC_IN4

T26	SARADC5	ADC	SARADC_IN5
T27	MIPI_CSI0_RX_D0N	MIPI 摄像头	MIPI_CSI0_D0N
T28	SARADC6	ADC	SARADC_IN6
T29	MIPI_CSI0_RX_D0P	MIPI 摄像头	MIPI_CSI0_D0P
T30	MIPI_CSI0_RX_D1N		MIPI_CSI0_D1N
T31	MIPI_CSI0_RX_D1P		MIPI_CSI0_D1P
T32	MIPI_CSI0_RX_CLK0N		MIPI_CSI0_CLK0N
T33	MIPI_CSI0_RX_CLK0P		MIPI_CSI0_CLK0P
T34	MIPI_CSI0_RX_D2N		MIPI_CSI0_D2N
T35	HDMI1_TX_SBDP/eDP1_TX_AUXP	HDMI 输出	HDMI_TX1_SBDP/eDP_TX1_AUXP
T36	HDMI1_TX_SBDN/eDP1_TX_AUXN		HDMI_TX1_SBDP/eDP_TX1_AUXN
T37	HDMI1_TX0P_PORT/eDP1_TX_D0P		HDMI_TX1_D0P/eDP_TX1_D0P
T38	MIPI_CSI0_RX_D2P	MIPI 摄像头	MIPI_CSI0_D2P
T39	MIPI_CSI0_RX_D3N		MIPI_CSI0_D3N
T40	HDMI1_TX0N_PORT/eDP1_TX_D0N	HDMI 输出	HDMI1_TX0N_PORT/eDP1_TX_D0N
T41	HDMI1_TX1P_PORT/eDP1_TX_D1P		HDMI_TX1_D1P/eDP_TX1_D1P
T42	HDMI1_TX1N_PORT/eDP1_TX_D1N		HDMI_TX1_D1N/eDP_TX1_D1N
T43	MIPI_CSI0_RX_D3P	MIPI 摄像头	MIPI_CSI0_D3P
T44	MIPI_CAM3_CLKOUT	时钟输出(摄像头)	MIPI_CAMERA3_CLK_M0/HDMI_RX_SCL_M2/I2C8_SCL_M2/UART1_RTSN_M1/PWM14_M2/GPIO1_D6_u
T45	HDMI1_TX2P_PORT/eDP1_TX_D2P	HDMI 输出	HDMI1_TX2P_PORT/eDP1_TX_D2P
T46	HDMI1_TX2N_PORT/eDP1_TX_D2N		HDMI_TX1_D2N/eDP_TX1_D2N
T47	HDMI1_TX3P_PORT/eDP1_TX_D3P		HDMI_TX1_D3P/eDP_TX1_D3P
T48	MIPI_CSI0_RX_CLK1N	MIPI 摄像头	MIPI_CSI0_CLK1N
T49	MIPI_CSI0_RX_CLK1P		MIPI_CSI0_CLK1P
T50	HDMI1_TX3N_PORT/eDP1_TX_D3N	HDMI 输出	HDMI_TX1_D3P/eDP_TX1_D3N
T51	HDMITX1_SDA_M1		CIF_D9/FSPI_CS1N_M2/PCIE30X4_WAKEN_M2/HDMI_TX1_SDA_M1/UART5_RX_M1/SPI3_CS1_M3/GPIO3_C5_u
T52	HDMITX1_SCL_M1		CIF_D10/PCIE30X4_PERSTN_M2/HDMI_TX1_SCL_M1/SPI3_MISO_M3/GPIO3_C6_u

T53	HDMITX1_CEC_M2	HDMI 输出	CIF_D8/FSPI_CS0N_M2/PCIE30X4_CLKREQN_M2/HDMI_TX1_CEC_M2/UART5_TX_M1/SPI3_CS0_M3/GPIO3_C4_u
T54	GPIO1_A6_d		HDMI_TX1_HPD_M0/SPI2_CLK_M0/GPIO1_A6_d
T55	HDMI1_TX_ON_H	HDMI 输出	GMAC1_TXER/I2S2_SDI_M1/UART2_RX_M2/PWM3_IR_M1/GPIO3_B2_d
T56	USB20_HOST1_DM	USB2.0	USB20_HOST1_DM
T57	USB20_HOST1_DP		USB20_HOST1_DP
T58	USB20_HOST0_DM	USB2.0	USB20_HOST0_DM

四、联系方式

总公司：广州佩特电子科技有限公司

总公司地址：广州市天河区大观中路新塘大街鑫盛工业园 A1 栋 201

总公司网站：<http://www.gzpeite.net>

SMT 子公司：广州佩特精密电子科技有限公司（全资子公司）

子公司地址：广州市白云区人和镇大巷村顺景路 11 号

SMT 网站：<http://www.gzptjm.com>

官方淘宝店：<https://shop149045251.taobao.com>

微信扫描二维码联系支持人员：



广州佩特电子科技有限公司

2024 年 12 月