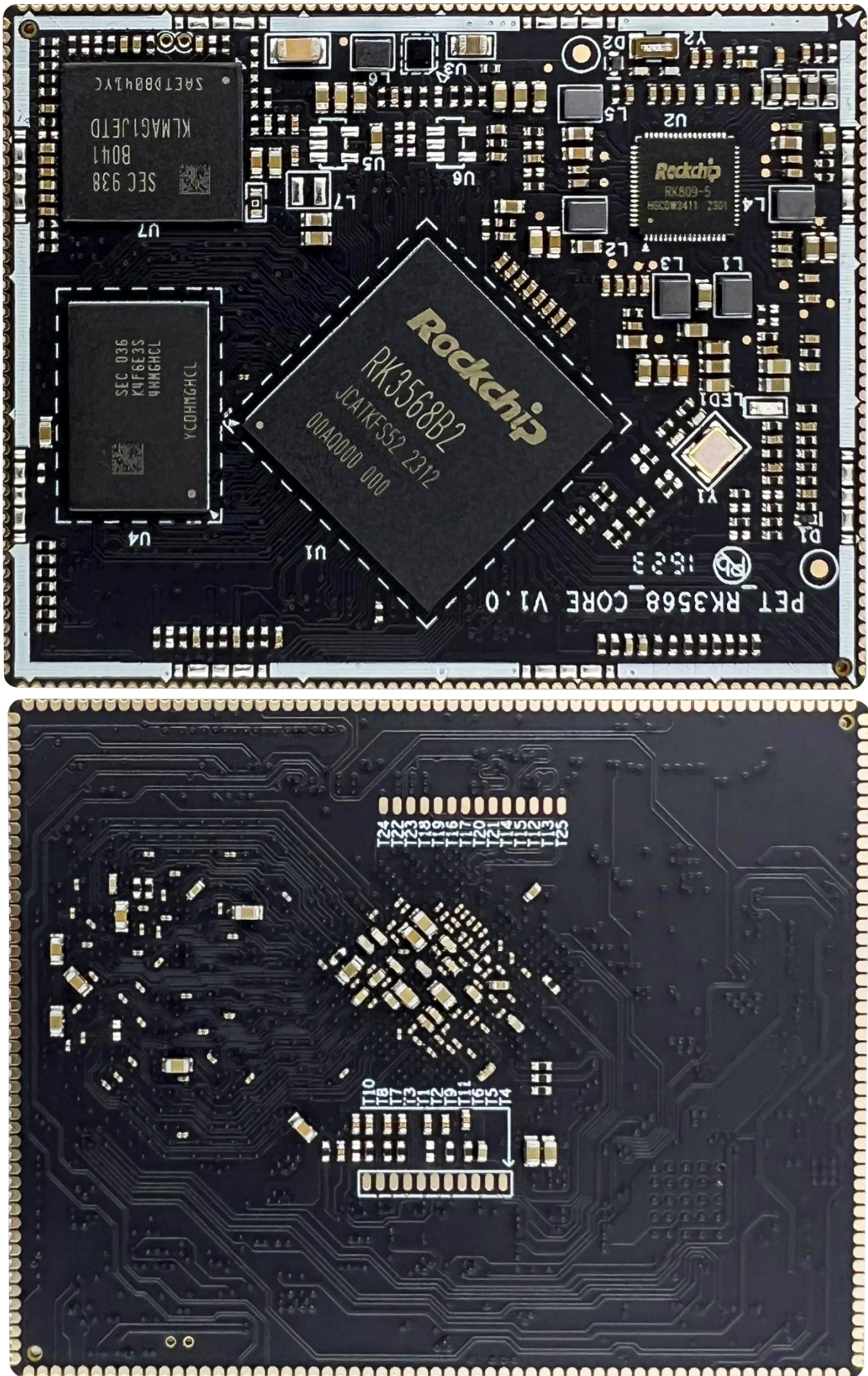
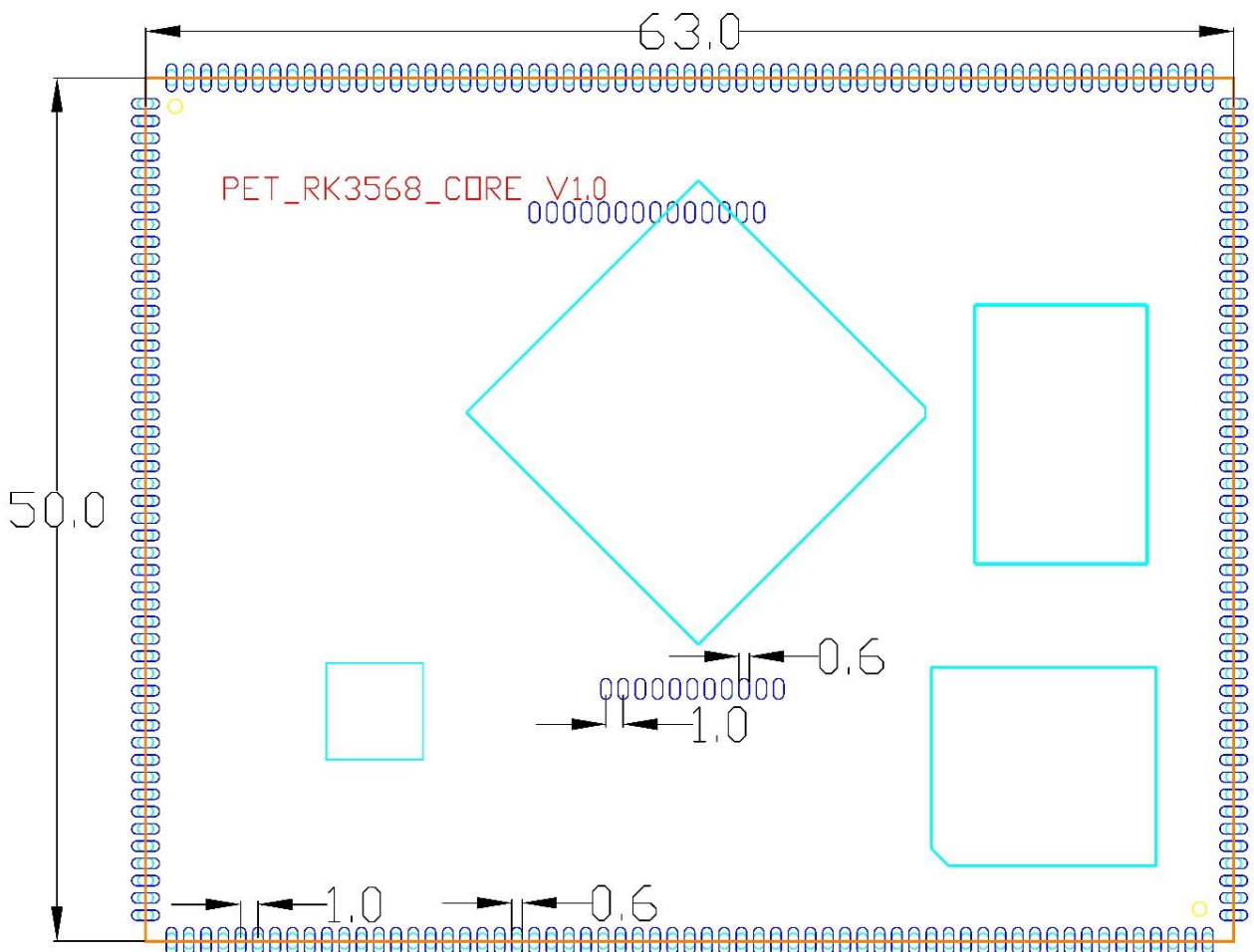
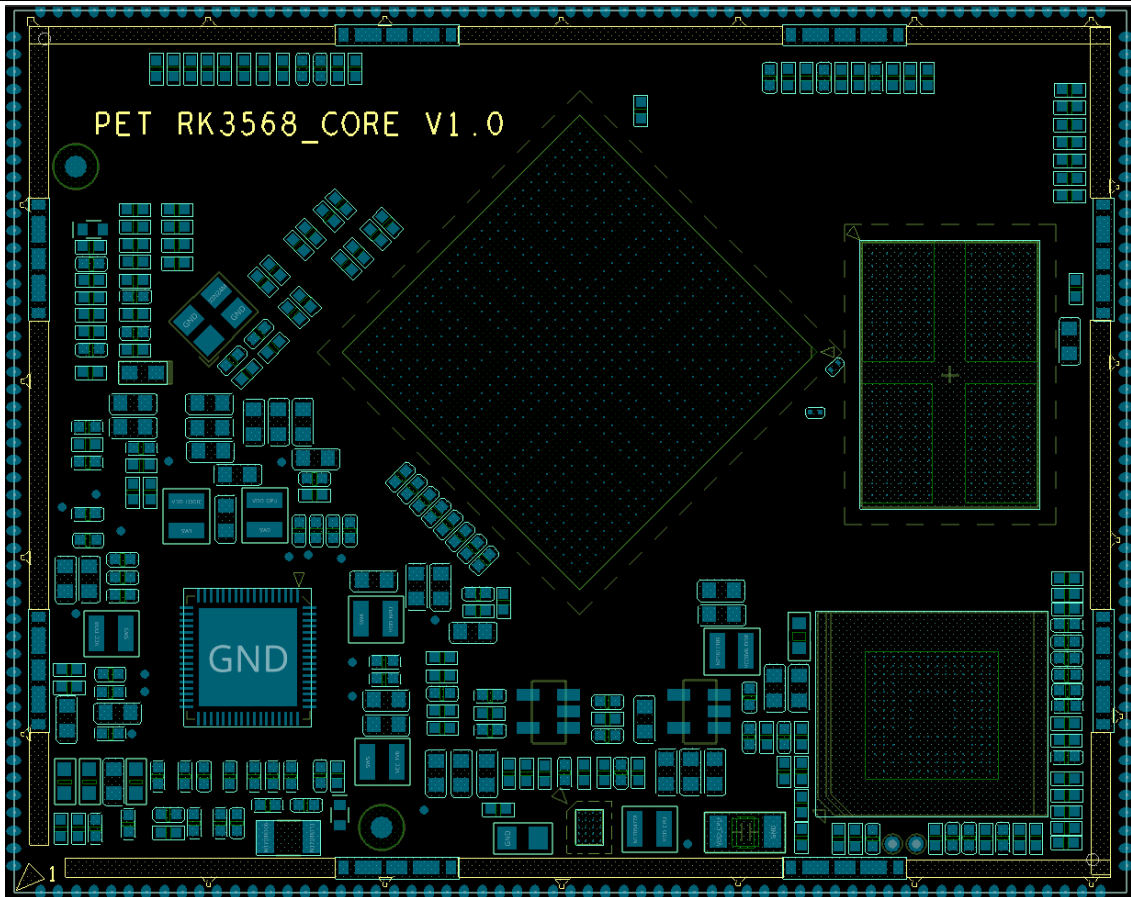




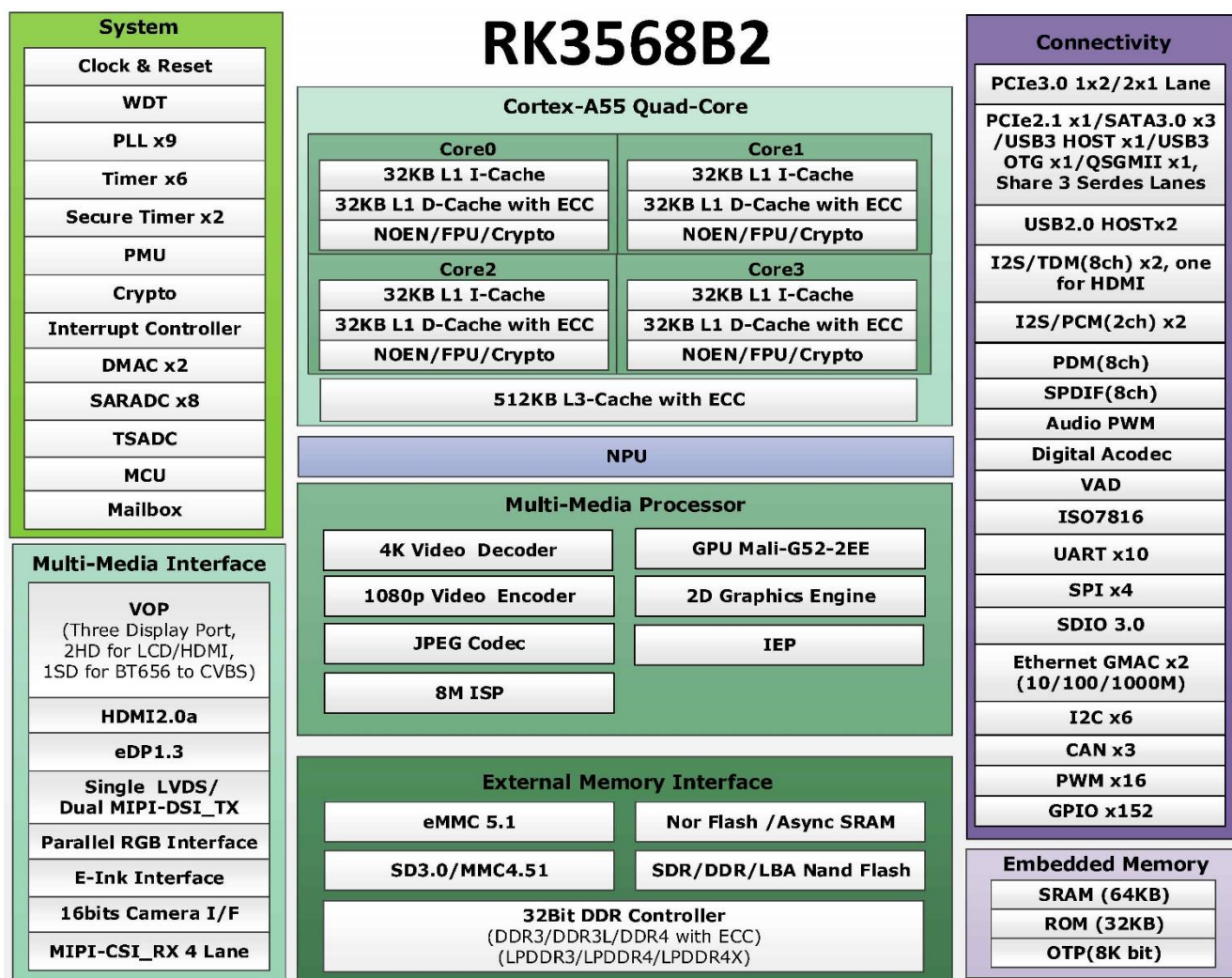
PET_RK3568_CORE 核心板 说明书

一、PET_RK3568_CORE 核心板图片





二、PET_RK3568_CORE 核心板详细参数



PET-RK3568 核心板参数	
处理器	RK3568 Cortex A55 四核 64 位 ARM64, 最高主频 2.0G
内置 NPU	RKNN NPU, 1TOPS 算力, 用于 AI 计算
内置 GPU	MALI-G52-2EE, 支持 OpenCL 2.0, OpenGL ES 1.1、2.0、3.2, Vulkan1.1
内置视频编解码	支持 4K@60fps H265 格式硬解码、1080P@60fps 硬编码
内存 LPDDR4	2GB / 4GB / 8GB, 标配 2GB
存储 EMMC	16GB / 32GB / 64GB / 128GB, 标配 16GB
操作系统	支持安卓 Android 12、Buildroot Linux、Debian、Ubuntu、鸿蒙 HarmonyOS 等
PET-RK3568 核心板引脚功能	
多屏异显输出	可同时支持 3 屏异显
LVDS 显示输出	双 8 双通道 1920x1080 (通过底板 MIPI 转 LVDS 芯片实现)、单 8 单通道 1280x800
eDP 显示输出	最大支持分辨率 2560x1600
MIPI 显示输出	双通道最大支持分辨率 2048x1536, 单通道最大支持分辨率 1920x1080
HDMI 显示输出	最大支持分辨率 4096x2160
RGB/BT1120 显示	最大支持分辨率 1920x1080
BT656/TVOUT 显示	支持 PAL/NTSC, 支持 RGB 8 Bit

视频输入接口	MIPI 1 路(4 Lane)
按键接口	电源键、烧写键、复位键、ADC 按键、GPIO 按键、GPIO 矩阵键盘
千兆以太网接口	2 路
USB 接口	USB3.0 2 路、USB2.0 2 路、OTG 1 路；用于 USB 外设、4G/5G 模组、USB 摄像头等
SDIO 接口	3 路，可用于 TF 卡、WIFI 蓝牙模组等
SPI 接口	4 路
SARADC 接口	8 路，10bit / 1MSPS / 12MHz 频率；用于 ADC 按键、配置选择、ADC 输入检测
I2C 接口	5 路，用于电容触摸屏，I2C 外设等
UART 串口	10 路
I2S 接口	3 路
PWM 接口	15 路，用于 IR 红外输入、PWM 输出、显示屏背光控制等
CAN 接口	3 路
PCIE3.0 接口	1 路，2 Lane；可以拆分为 2 路 1 Lane，可用 M2 电子盘等
PCIE2.1 接口	1 路，1 Lane；可用于 SATA 固态硬盘等
SATA3.0 接口	3 路
SPDIF	1 路，8 通道
耳机输出接口	1 路，双通道
喇叭输出接口	1 路，8 欧 1.3W
麦克风输入接口	1 路
GPIO/中断	多路
PET-RK3568 核心板结构参数	
尺寸	63 x 50 mm，厚度 1.2mm
邮票孔间距	1.0mm
引脚数	243 pin
PCB 工艺	八层板，沉金工艺

注意：RK3568 引脚大部分是功能复用的，以上列表内的资源存在不能同时使用的情况，引脚功能复用情况可以查询下表或查看我司核心板精简版原理图。

三、PET_RK3568_CORE 核心板引脚详细说明

	名称	系统 SDK 默认功能	CPU 引脚可选配置功能
1	RK809_VDC	上电/按键启动选择	
2	VCC5V0_SYS	5V 电源输入	
3	VCC3V3_SYS	3.3V 电源输入	
4	VCC3V3_SD	3.3V 电源(TF 卡)	
5	VCC_3V3	3.3V 电源输出	
6	VCC_1V8	1.8V 电源输出	
7	GND	电源地	
8	GPIO4_D2	GPIO	GPIO
9	EXT_EN	EXT_EN 输出信号	
10	PWRON_KEY	电源键输入信号	
11	RESET_KEY	复位按键输入信号	
12	GPIO0_C7_d	GPIO(调试灯)	HDMITX_CEC_M1/PWM0_M1/UART0_CTSn/GPIO0_C7_d
13	GND	电源地	
14	PCIE30_RX1N	M.2 接口 NVME 电子盘	PCIE30_RX1N
15	PCIE30_RX1P		PCIE30_RX1P
16	PCIE30_RX0N		PCIE30_RX0N
17	PCIE30_RX0P		PCIE30_RX0P
18	PCIE30_TX1N		PCIE30_TX1N
19	PCIE30_TX1P		PCIE30_TX1P
20	PCIE30_TX0N		PCIE30_TX0N
21	PCIE30_TX0P		PCIE30_TX0P
22	PCIE30_REFCLKP_IN		PCIE30_REFCLKP_IN
23	PCIE30_REFCLKN_IN		PCIE30_REFCLKN_IN
24	PCIE20_REFCLKP	未使用	PCIE20_REFCLKP
25	PCIE20_REFCLKN	未使用	PCIE20_REFCLKN

26	GND	电源地	
27	SATA2_TXP	SATA 固态硬盘接口	PCIE20_TXP/SATA2_TXP/QSGMII_TXP_M1
28	SATA2_TXN		PCIE20_TXN/SATA2_TXN/QSGMII_TXN_M1
29	SATA2_RXP		PCIE20_RXP/SATA2_RXP/QSGMII_RXP_M1
30	SATA2_RXN		PCIE20_RXN/SATA2_RXN/QSGMII_RXN_M1
31	USB3_HOST1_SSTXP	USB3.0 接口 1 信号	USB3_HOST1_SSTXP/SATA1_TXP/QSGMII_TXP_M0
32	USB3_HOST1_SSTXN		USB3_HOST1_SSTXN/SATA1_TXN/QSGMII_TXN_M0
33	USB3_HOST1_SSRXN		USB3_HOST1_SSRXN/SATA1_RXN/QSGMII_RXN_M0
34	USB3_HOST1_SSRXP		USB3_HOST1_SSRXP/SATA1_RXP/QSGMII_RXP_M0
35	USB3_OTG0_SSTXP	USB3.0 接口 2 信号	USB3_OTG0_SSTXP/SATA0_TXP
36	USB3_OTG0_SSTXN		USB3_OTG0_SSTXN/SATA0_TXN
37	USB3_OTG0_SSRXN		USB3_OTG0_SSRXN/SATA0_RXN
38	USB3_OTG0_SSRXP		USB3_OTG0_SSRXP/SATA0_RXP
39	USB3_OTG0_DM	USB_OTG	USB3_OTG0_DM
40	USB3_OTG0_DP	USB3.0 接口 2 信号	USB3_OTG0_DP
41	USB3_HOST1_DM	USB3.0 接口 1 信号	USB3_HOST1_DM
42	USB3_HOST1_DP		USB3_HOST1_DP
43	USB3_HOST2_DM	USB2.0 接口 1	USB3_HOST2_DM
44	USB3_HOST2_DP		USB3_HOST2_DP
45	USB3_HOST3_DM	USB2.0 接口	USB3_HOST3_DM
46	USB3_HOST3_DP		USB3_HOST3_DP
47	USB3_OTG0_VBUSDET	USB_OTG	USB3_OTG0_VBUSDET
48	USB3_OTG0_ID	USB_OTG	USB3_OTG0_ID
49	SDMMC0_DET_L	SDMMC0 TF 卡接口	SDMMC0_DET/SATA_CP_DET/PCIE30X1_CLKREQn_M0/GPIO0_A4_u
50	SDMMC0_D1		SDMMC0_D1/UART2_RX_M1/UART6_RX_M1/PWM9_M1/GPIO1_D6_u
51	SDMMC0_D0		SDMMC0_D0/UART2_TX_M1/UART6_TX_M1/PWM8_M1/GPIO1_D5_u
52	SDMMC0_CLK		SDMMC0_CLK/TEST_CLKOUT/UART5_TX_M0/CAN0_RX_M1
53	SDMMC0_CMD		SDMMC0_CMD/PWM10_M1/UART5_RX_M0/CAN0_TX_M1/GPIO2_A1_u

54	SDMMC0_D2		SDMMC0_D2/ARMJTAG_TCK/UART5_CTSn_M0/GPIO1_D7_u
55	SDMMC0_D3		SDMMC0_D3/ARMJTAG_TMS/UART5_RTsn_M0/GPIO2_A0_u
56	SARADC_VIN2_LCD_ID	LCD 型号 ADC 配置	SARADC_VIN2
57	SARADC_VIN1_LCD_ID	LCD 型号 ADC 配置	SARADC_VIN1
58	SARADC_VIN0_KEY	ADC 按键	SARADC_VIN0
59	GPIO1_D4_d	GPIO	GPIO1_D4_u
60	GPIO1_B1_d	GPIO	I2S1_SDO2_M0/I2S1_SDI2_M0/PDM_SDI2_M0/PCIE20_WAKEn_M2/ /GPIO1_B1_d
61	GPIO1_B2_d	GPIO	I2S1_SDO3_M0/I2S1_SDI1_M0/PDM_SDI1_M0/PCIE20_PERSTn_M2/GPIO1_B2_d
62	GMAC0_TXEN	千兆以太网 0 GMAC0	GMAC0_TXEN/UART1_RTsn_M0/SPI1_CLK_M0/GPIO2_B5_u
63	GMAC0_TXD3		SDMMC1_CMD/GMAC0_TXD3/UART9_RX_M0/GPIO2_A7_u
64	GMAC0_TXD2		SDMMC1_D3/GMAC0_TXD2/UART7_TX_M0/GPIO2_A6_u
65	GMAC0_TXD1		GMAC0_TXD1/UART1_TX_M0/GPIO2_B4_u
66	GMAC0_TXD0		GMAC0_TXD0/UART1_RX_M0/GPIO2_B3_u
67	GMAC0_TXCLK		SDMMC1_CLK/GMAC0_TXCLK/UART9_TX_M0/GPIO2_B0_d
68	GMAC0_RXD3		SDMMC1_D1/GMAC0_RXD3/UART6_TX_M0/GPIO2_A4_u
69	GMAC0_RXD2		SDMMC1_D0/GMAC0_RXD2/UART6_RX_M0/GPIO2_A3_u
70	GMAC0_RXD1		I2S2_SCLK_RX_M0/GMAC0_RXD1/UART6_RTsn_M0/SPI1_MOSI_M0/GPIO2_B7_d
71	GMAC0_RXD0		GMAC0_RXD0/UART1_CTSn_M0/SPI1_MISO_M0/GPIO2_B6_u
72	GMAC0_RXDV_CRS		I2S2_LRCK_RX_M0/GMAC0_RXDV_CRS/UART6_CTSn_M0/SPI1_CS0_M0/GPIO2_C0_d
73	GMAC0_RXCLK		SDMMC1_D2/GMAC0_RXCLK/UART7_RX_M0/GPIO2_A5_u
74	GMAC0_MCLKINOUT		I2S2_SCLK_TX_M0/GMAC0_MCLKINOUT/UART7_CTSn_M0/SPI2_MISO_M0/GPIO2_C2_d
75	GMAC0_MDC		I2S2_LRCK_TX_M0/GMAC0_MDC/UART9_RTsn_M0/SPI2_MOSI_M0/GPIO2_C3_d
76	ETH0_REFCKO_25M		I2S2_MCLK_M0/ETH0_REFCKO_25M/UART7_RTsn_M0/SPI2_CLK_M0/GPIO2_C1_d
77	GMAC0_MDIO	I2S2_SDO_M0/GMAC0_MDIO/UART9_CTSn_M0/SPI2_CS0_M0/GPIO2_C4_d	
78	GMAC0_INT/PMEB_GPIO2_D2	GPOP(风扇控制)	LCDC_D2/VOP_BT656_D2_M0/SPI0_CS0_M1/PCIE30X1_CLKREQn_M1/I2S1_LRCK_TX_M2/ GPIO2_D2_d
79	GMAC0_RSTn_GPIO2_D3	GPIO(GMAC0 复位)	LCDC_D3/VOP_BT656_D3_M0/SPI0_CLK_M1/PCIE30X1_WAKEn_M1/I2S1_SDI0_M2/GPIO2_D3_d
80	GND	电源地	
81	GPIO1_A4_d	SPDIF 输出	I2S1_SCLK_RX_M0/UART4_RX_M0/PDM_CLK1_M0/SPDIF_TX_M0/GPIO1_A4_d

82	SPKP_OUT	喇叭输出	SPKP_OUT
83	SPKN_OUT		SPKN_OUT
84	GPIO1_B0_d	GPIO(耳机检测)	I2S1_SDO1_M0/I2S1_SDI3_M0/PDM_SDI3_M0/PCIE20_CLKREQn_M2/GPIO1_B0_d
85	HP_SNS	耳机输出	HP_SNS
86	HPR_OUT		HPR_OUT
87	HPL_OUT		HPL_OUT
88	MIC1_INP	麦克风输入	MIC1_INP
89	MIC1_INN		MIC1_INN
90	GND	电源地	
91	GMAC1_MDC_M1/GPIO4_B6	千兆以太网 1 GMAC1	CIF_HREF/EBC_SDLE/GMAC1_MDC_M1/UART1_RTSn_M1/I2S2_MCLK_M1/GPIO4_B6_d
92	GMAC1_MDIO_M1/GPIO4_B7		CIF_VSYNC/EBC_SDOE/GMAC1_MDIO_M1/I2S2_SCLK_TX_M1/GPIO4_B7_d
93	GMAC1_MCLKINOUT_M1/GPIO4_C1		CIF_CLKIN/EBC_SDCLK/GMAC1_MCLKINOUT_M1/UART1_CTSn_M1/I2S2_SCLK_RX_M1/GPIO4_C1_d
94	GMAC1_RXD3_M1/GPIO4_A2		CIF_D12/EBC_SDDO12/GMAC1_RXD3_M1/UART7_TX_M2/PDM_SDI2_M1/GPIO4_A2_d
95	GMAC1_RXD2_M1/GPIO4_A1		CIF_D11/EBC_SDDO11/GMAC1_RXD2_M1/PDM_SDI1_M1/GPIO4_A1_d
96	GMAC1_RXD1_M1/GPIO4_B0		CAM_CLKOUT1/EBC_SDCE2/GMAC1_RXD1_M1/SPI3_MISO_M0/I2S1_SDO1_M1/GPIO4_B0_d
97	GMAC1_RXD0_M1/GPIO4_A7		CAM_CLKOUT0/EBC_SDCE1/GMAC1_RXD0_M1/SPI3_CS1_M0/I2S1_LRCK_RX_M1/GPIO4_A7_d
98	GMAC1_RXDV_CRS_M1/GPIO4_B1		ISP_PRELIGHT_TRIG/EBC_SDCE3/GMAC1_RXDV_CRS_M1/I2S1_SDO2_M1/GPIO4_B1_d
99	GMAC1_RXCLK_M1/GPIO4_A3		CIF_D13/EBC_SDDO13/GMAC1_RXCLK_M1/UART7_RX_M2/PDM_SDI3_M1/GPIO4_A3_d
100	GMAC1_TXEN_M1/GPIO4_A6		ISP_FLASHTRIGOUT/EBC_SDCE0/GMAC1_TXEN_M1/SPI3_CS0_M0/I2S1_SCLK_RX_M1/GPIO4_A6_d
101	GMAC1_TXD3_M1/GPIO3_D7		CIF_D9/EBC_SDDO9/GMAC1_TXD3_M1/UART1_RX_M1/PDM_SDI0_M1/GPIO3_D7_d
102	GMAC1_TXD2_M1/GPIO3_D6		CIF_D8/EBC_SDDO8/GMAC1_TXD2_M1/UART1_TX_M1/PDM_CLK0_M1/GPIO3_D6_d
103	GMAC1_TXD1_M1/GPIO4_A5		CIF_D15/EBC_SDDO15/GMAC1_TXD1_M1/UART9_RX_M2/I2S2_LRCK_RX_M1/GPIO4_A5_d
104	GMAC1_TXD0_M1/GPIO4_A4		CIF_D14/EBC_SDDO14/GMAC1_TXD0_M1/UART9_TX_M2/I2S2_LRCK_TX_M1/GPIO4_A4_d
105	GMAC1_TXCLK_M1/GPIO4_A0		CIF_D10/EBC_SDDO10/GMAC1_TXCLK_M1/PDM_CLK1_M1/GPIO4_A0_d
106	GMAC1_RSTn_GPIO2_D1	GPIO(GMAC1 复位)	LCDC_D1/VOP_BT656_D1_M0/SPI0_MOSI_M1/PCIE20_WAKEn_M1/I2S1_SCLK_TX_M2/GPIO2_D1_d
107	ETH1_REFCLKO_25M_M0	25M 时钟(GMAC1)	LCDC_D15/VOP_BT1120_D6/ETH1_REFCLKO_25M_M0/SDMMC2_PWREN_M1/GPIO3_B0_d
108	GMAC1_INT/PMEB_GPIO2_D0	GPIO	LCDC_D0/VOP_BT656_D0_M0/SPI0_MISO_M1/PCIE20_CLKREQn_M1/I2S1_MCLK_M2/GPIO2_D0_d
109	UART8_RTSn_M0	UART8(BT)	SDMMC1_PWREN/I2C4_SDA_M1/UART8_RTSn_M0/CAN2_RX_M1/GPIO2_B1_d

110	UART8_CTSn_M0		SDMMC1_DET/I2C4_SCL_M1/UART8_CTSn_M0/CAN2_TX_M1/GPIO2_B2_u
111	UART8_RX_M0		CLK32K_OUT1/UART8_RX_M0/SPI1_CS1_M0/GPIO2_C6_d
112	UART8_TX_M0		I2S2_SDI_M0/GMAC0_RXER/UART8_TX_M0/SPI2_CS1_M0/GPIO2_C5_d
113	WIFI_REG_ON_H_GPIO3_D5	GPIO(WIFI)	CIF_D7/EBC_SDDO7/SDMMC2_PWREN_M0/I2S1_SDI3_M1/VOP_BT656_D7_M1/GPIO3_D5_d
114	WIFI_WAKE_HOST_H_GPIO3_D4	GPIO(MIPI_CSI)	CIF_D6/EBC_SDDO6/SDMMC2_DET_M0/I2S1_SDI2_M1/VOP_BT656_D6_M1/GPIO3_D4_d
115	SDMMC2_CMD_M0	SDIO(WIFI)	CIF_D4/EBC_SDDO4/SDMMC2_CMD_M0/I2S1_SDI0_M1/VOP_BT656_D4_M1/GPIO3_D2_d
116	SDMMC2_D3_M0		CIF_D3/EBC_SDDO3/SDMMC2_D3_M0/I2S1_SDO0_M1/VOP_BT656_D3_M1/GPIO3_D1_d
117	SDMMC2_D2_M0		CIF_D2/EBC_SDDO2/SDMMC2_D2_M0/I2S1_LRCK_TX_M1/VOP_BT656_D2_M1/GPIO3_D0_d
118	SDMMC2_D1_M0		CIF_D1/EBC_SDDO1/SDMMC2_D1_M0/I2S1_SCLK_TX_M1/VOP_BT656_D1_M1/GPIO3_C7_d
119	SDMMC2_CLK_M0		CIF_D5/EBC_SDDO5/SDMMC2_CLK_M0/I2S1_SDI1_M1/VOP_BT656_D5_M1/GPIO3_D3_d
120	SDMMC2_D0_M0		CIF_D0/EBC_SDDO0/SDMMC2_D0_M0/I2S1_MCLK_M1/VOP_BT656_D0_M1/GPIO3_C6_d
121	HOST_WAKE_BT_H_GPIO3_A2	GPIO(BT)	LCDC_D9/VOP_BT1120_D1/GMAC1_TXD2_M0/I2S3_MCLK_M0/SDMMC2_D1_M1/GPIO3_A2_d
122	I2S3_SCLK_M0	I2S3(BT)	LCDC_D10/VOP_BT1120_D2/GMAC1_TXD3_M0/I2S3_SCLK_M0/SDMMC2_D2_M1/GPIO3_A3_d
123	I2S3_SDI_M0		LCDC_D13/VOP_BT1120_CLK/GMAC1_TXCLK_M0/I2S3_SDI_M0/SDMMC2_CLK_M1/GPIO3_A6_d
124	I2S3_SDO_M0		LCDC_D12/VOP_BT1120_D4/GMAC1_RXD3_M0/I2S3_SDO_M0/SDMMC2_CMD_M1/GPIO3_A5_d
125	I2S3_LRCK_M0		LCDC_D11/VOP_BT1120_D3/GMAC1_RXD2_M0/I2S3_LRCK_M0/SDMMC2_D3_M1/GPIO3_A4_d
126	BT_REG_ON_H_GPIO3_A0	GPIO(BT)	LCDC_CLK/VOP_BT656_CLK_M0/SPI2_CLK_M1/UART8_RX_M1/I2S1_SDO1_M2/GPIO3_A0_d
127	WIFIBT_32KIN_2T2R	32.768K 时钟输出	
128	GPIO2_D7_d	GPIO	LCDC_D7/VOP_BT656_D7_M0/SPI2_MISO_M1/UART8_TX_M1/I2S1_SDO0_M2/GPIO2_D7_d
129	PCIE30X2_WAKEn_M1	M.2 接口	LCDC_D5/VOP_BT656_D5_M0/SPI2_CS0_M1/PCIE30X2_WAKEn_M1/I2S1_SDI2_M2/GPIO2_D5_d
130	PCIECLKIC_OE_H_GPIO3_A7	GPIO	LCDC_D14/VOP_BT1120_D5/GMAC1_RXCLK_M0/SDMMC2_DET_M1/GPIO3_A7_d
131	PCIE30X2_CLKREQn_M1	M.2 接口	LCDC_D4/VOP_BT656_D4_M0/SPI2_CS1_M1/PCIE30X2_CLKREQn_M1/I2S1_SDI1_M2/GPIO2_D4_d
132	PCIE30X2_PERSTn_M1	M.2 接口	LCDC_D6/VOP_BT656_D6_M0/SPI2_MOSI_M1/PCIE30X2_PERSTn_M1/I2S1_SDI3_M2/GPIO2_D6_d
133	SATA2_ACT_LED/GPIO4_C4	GPIO	EDP_HPDIN_M0/SPDIF_TX_M2/SATA2_ACT_LED/PCIE30X2_PERSTn_M2/I2S3_LRCK_M1/GPIO4_C4_d
134	RTCIC_INT_L_GPIO0_D3_d	GPIO(RTC 中断)	GPIO0_D3_d
135	UART3_RX_M1	UART3	LCDC_D23/PWM13_M0/GMAC1_MCLKINOUT_M0/UART3_RX_M1/PDM_SDI3_M2/GPIO3_C0_d
136	UART3_TX_M1		LCDC_D22/PWM12_M0/GMAC1_TXEN_M0/UART3_TX_M1/PDM_SDI2_M2/GPIO3_B7_d
137	UART4_RX_M1	UART4	LCDC_D16/VOP_BT1120_D7/GMAC1_RXD0_M0/UART4_RX_M1/PWM8_M0/GPIO3_B1_d

138	UART4_TX_M1		LCDC_D17/VOP_BT1120_D8/GMAC1_RXD1_M0/UART4_TX_M1/PWM9_M0/GPIO3_B2_d
139	PWM14_M0/UART7_TX_M1	UART7	PWM14_M0/VOP_PWM_M1/GMAC1_MDC_M0/UART7_TX_M1/PDM_CLK1_M2/GPIO3_C4_d
140	SPDIF_TX_M1//UART7_RX_M1		PWM15_IR_M0/SPDIF_TX_M1/GMAC1_MDIO_M0/UART7_RX_M1/I2S1_LRCK_RX_M2/GPIO3_C5_d
141	UART9_RX_M1	UART9	PWM13_M1/SPI3_CS0_M1/SATA0_ACT_LED/UART9_RX_M1/I2S3_SDI_M1/GPIO4_C6_d
142	UART9_TX_M1		PWM12_M1/SPI3_MISO_M1/SATA1_ACT_LED/UART9_TX_M1/I2S3_SDO_M1/GPIO4_C5_d
143	UART2_TX_M0_DEBUG	UART2	UART2_TX_M0/GPIO0_D1_u
144	UART2_RX_M0_DEBUG		UART2_RX_M0/GPIO0_D0_u
145	CAN1_RX_M1/GPIO4_C2	CAN	PWM14_M1/SPI3_CLK_M1/CAN1_RX_M1/PCIE30X2_CLKREQn_M2/I2S3_MCLK_M1/GPIO4_C2_d
146	CAN1_TX_M1/GPIO4_C3		PWM15_IR_M1/SPI3_MOSI_M1/CAN1_TX_M1/PCIE30X2_WAKEn_M2/I2S3_SCLK_M1/GPIO4_C3_d
147	GND	电源地	
148	PWM7_IR	IR 红外输入	PWM7_IR/SPI0_CS0_M0/PCIE30X2_PERSTn_M0/GPIO0_C6_d
149	PWM6_M0/GPIO0_C5_d	PWM6	PWM6/SPI0_MISO_M0/PCIE30X2_WAKEn_M0/GPIO0_C5_d
150	PWM2_M0/GPIO0_C1_d	PWM2	PWM2_M0/NPUAVS/UART0_TX/MCU_JTAG_TDI/GPIO0_C1_d
151	PWM1_M0/GPIO0_C0_d	PWM1	PWM1_M0/GPUAVS/UART0_RX/GPIO0_C0_d
152	SPI1_CLK_M1/GPIO3_C3_d	GPIO	LCDC_DEN/VOP_BT1120_D15/SPI1_CLK_M1/UART5_RX_M1/I2S1_SCLK_RX_M2/GPIO3_C3_d
153	SPI1_CS0_M1/GPIO3_A1_d	GPIO	LCDC_D8/VOP_BT1120_D0/SPI1_CS0_M1/PCIE30X1_PERSTn_M1/SDMMC2_D0_M1/GPIO3_A1_d
154	SPI1_MISO_M1/GPIO3_C2_d	GPIO	LCDC_VSYNC/VOP_BT1120_D14/SPI1_MISO_M1/UART5_TX_M1/I2S1_SDO3_M2/GPIO3_C2_d
155	SPI1_MOSI_M1/GPIO3_C1_d	GPIO	LCDC_HSYNC/VOP_BT1120_D13/SPI1_MOSI_M1/PCIE20_PERSTn_M1/I2S1_SDO2_M2/GPIO3_C1_d
156	I2C4_SDA_M0	I2C4	I2C4_SDA_M0/EBC_VCOM/GMAC1_RXER_M1/SPI3_MOSI_M0/I2S2_SDI_M1/GPIO4_B2_d
157	I2C4_SCL_M0		I2C4_SCL_M0/EBC_GDOE/ETH1_REFCLKO_25M_M1/SPI3_CLK_M0/I2S2_SDO_M1/GPIO4_B3_d
158	I2C2_SDA_M1	I2C2	I2C2_SDA_M1/EBC_GDSP/CAN2_RX_M0/ISP_FLASH_TRIGIN/VOP_BT656_CLK_M1/GPIO4_B4_d
159	I2C2_SCL_M1		I2C2_SCL_M1/EBC_SDSHR/CAN2_TX_M0/I2S1_SDO3_M1/GPIO4_B5_d
160	I2C5_SDA_M0/GPIO3_B4_d	GPIO(NFC)	LCDC_D19/VOP_BT1120_D10/GMAC1_RXER_M0/I2C5_SDA_M0/PDM_SDI1_M2/GPIO3_B4_d
161	I2C5_SCL_M0/GPIO3_B3_d	GPIO(NFC)	LCDC_D18/VOP_BT1120_D9/GMAC1_RXDV_CRS_M0/I2C5_SCL_M0/PDM_SDI0_M2/GPIO3_B3_d
162	I2C3_SDA_M0/GPIO1_A0_d	GPIO(NFC)	I2C3_SDA_M0/UART3_RX_M0/CAN1_RX_M0/AUDIOPWM_LOUT_P/ GPIO1_A0_u
163	I2C3_SCL_M0/GPIO1_A1_u	GPIO	I2C3_SCL_M0/UART3_TX_M0/CAN1_TX_M0/AUDIOPWM_LOUT_N/ GPIO1_A1_u
164	GPIO3_B5_d	GPIO(LCD 复位)	LCDC_D20/VOP_BT1120_D11/GMAC1_TXD0_M0/I2C3_SCL_M1/PWM10_M0/GPIO3_B5_d
165	GPIO3_B6_d	GPIO(LCD 电源)	LCDC_D21/VOP_BT1120_D12/GMAC1_TXD1_M0/I2C3_SDA_M1/PWM11_IR_M0/GPIO3_B6_d

166	MIPI_DSI_TX0_D3P/LVDS_TX0_D3P	MIPI0/LVDS 显示屏	MIPI_DSI_TX0_D3P/LVDS_TX0_D3P
167	MIPI_DSI_TX0_D3N/LVDS_TX0_D3N		MIPI_DSI_TX0_D3N/LVDS_TX0_D3N
168	MIPI_DSI_TX0_D2P/LVDS_TX0_D2P		MIPI_DSI_TX0_D2P/LVDS_TX0_D2P
169	MIPI_DSI_TX0_D2N/LVDS_TX0_D2N		MIPI_DSI_TX0_D2N/LVDS_TX0_D2N
170	MIPI_DSI_TX0_CLKP/LVDS_TX0_CLKP		MIPI_DSI_TX0_CLKP/LVDS_TX0_CLKP
171	MIPI_DSI_TX0_CLKN/LVDS_TX0_CLKN		MIPI_DSI_TX0_CLKN/LVDS_TX0_CLKN
172	MIPI_DSI_TX0_D1P/LVDS_TX0_D1P		MIPI_DSI_TX0_D1P/LVDS_TX0_D1P
173	MIPI_DSI_TX0_D1N/LVDS_TX0_D1N		MIPI_DSI_TX0_D1N/LVDS_TX0_D1N
174	MIPI_DSI_TX0_D0P/LVDS_TX0_D0P		MIPI_DSI_TX0_D0P/LVDS_TX0_D0P
175	MIPI_DSI_TX0_D0N/LVDS_TX0_D0N		MIPI_DSI_TX0_D0N/LVDS_TX0_D0N
176	MIPI_DSI_TX1_D3P	MIPI 显示屏	MIPI_DSI_TX1_D3P
177	MIPI_DSI_TX1_D3N		MIPI_DSI_TX1_D3N
178	MIPI_DSI_TX1_D2P		MIPI_DSI_TX1_D2P
179	MIPI_DSI_TX1_D2N		MIPI_DSI_TX1_D2N
180	MIPI_DSI_TX1_CLKP		MIPI_DSI_TX1_CLKP
181	MIPI_DSI_TX1_CLKN		MIPI_DSI_TX1_CLKN
182	MIPI_DSI_TX1_D1P		MIPI_DSI_TX1_D1P
183	MIPI_DSI_TX1_D1N		MIPI_DSI_TX1_D1N
184	MIPI_DSI_TX1_D0P		MIPI_DSI_TX1_D0P
185	MIPI_DSI_TX1_D0N		MIPI_DSI_TX1_D0N
186	GND	电源地	
187	HDMITX_CEC_M0	HDMI 显示输出	HDMITX_CEC_M0
188	HDMITX_SDA		HDMITX_SDA
189	HDMITX_SCL		HDMITX_SCL
190	HDMI_TX_HPDIN		HDMI_TX_HPDIN
191	HDMI_TXCLKN_PORT		HDMI_TXCLKN_PORT
192	HDMI_TXCLKP_PORT		HDMI_TXCLKP_PORT
193	HDMI_TXON_PORT		HDMI_TXON_PORT

194	HDMI_TX0P_PORT		HDMI_TX0P_PORT
195	HDMI_TX1N_PORT		HDMI_TX1N_PORT
196	HDMI_TX1P_PORT		HDMI_TX1P_PORT
197	HDMI_TX2N_PORT		HDMI_TX2N_PORT
198	HDMI_TX2N_PORT		HDMI_TX2N_PORT
199	GND	电源地	
200	EDP_HPDIN_M1	EDP 显示屏	EDP_HPDIN_M1
201	EDP_TX_AUXN		EDP_TX_AUXN
202	EDP_TX_AUXP		EDP_TX_AUXP
203	EDP_TX_D3N		EDP_TX_D3N
204	EDP_TX_D3P		EDP_TX_D3P
205	EDP_TX_D2N		EDP_TX_D2N
206	EDP_TX_D2P		EDP_TX_D2P
207	EDP_TX_D1N		EDP_TX_D1N
208	EDP_TX_D1P		EDP_TX_D1P
209	EDP_TX_D0N		EDP_TX_D0N
210	EDP_TX_D0P		EDP_TX_D0P
211	LCD1_BL_PWM4/GPIO0_C3_d	PWM4(LCD)	PWM4/VOP_PWM_M0/PCIE30X1_PERSTn_M0/MCU_JTAG_TRSTn/GPIO0_C3_d
212	LCD2_BL_PWM5/GPIO0_C4_d	PWM5(LCD)	PWM5/SPI0_CS1_M0/UART0_RTSn/GPIO0_C4_d
213	TP_RST_L_GPIO0_B6	GPIO(TP 复位)	I2C2_SDA_M0/SPI0_MOSI_M0/PCIE20_PERSTn_M0/PWM2_M1/GPIO0_B6_u
214	TP_INT_L_GPIO0_B5	GPIO(TP 中断)	I2C2_SCL_M0/SPI0_CLK_M0/PCIE20_WAKEn_M0/PWM1_M1/GPIO0_B5_u
215	I2C1_SCL_TP	I2C1	I2C1_SCL/CAN0_TX_M0/PCIE30X1_BUTTONRSTn/MCU_JTAG_TDO/GPIO0_B3_u
216	I2C1_SDA_TP		I2C1_SDA/CAN0_RX_M0/PCIE20_BUTTONRSTn/MCU_JTAG_TCK/GPIO0_B4_u
217	LCD0_BL_PWM0	PWM0(LCD)	PWM0_M0/CPUAVS/GPIO0_B7_d
218	GPIO0_A5_d	GPIO(背光控制)	SDMMC0_PWREN/SATA_MP_SWITCH/PCIE20_CLKREQn_M0/GPIO0_A5_d
T1	GPIO1_D1_d	GPIO	FSPI_D0/FLASH_RDY/GPIO1_D1_u
T2	GPIO1_D2_d	GPIO	FSPI_D1/FLASH_RDn/GPIO1_D2_u
T3	GPIO1_D3_d	GPIO	FSPI_CS0n/FLASH_CS0n/GPIO1_D3_u

T4	GPIO0_D4_d	GPIO(摄像头)	GPIO0_D4_d
T5	GPIO0_D5_d	GPIO(摄像头)	GPIO0_D5_d
T6	GPIO0_D6_d	GPIO(摄像头)	GPIO0_D6_d
T7	SARADC_VIN3	ADC3	SARADC_VIN3
T8	SARADC_VIN4	ADC4	SARADC_VIN4
T9	SARADC_VIN5	ADC5	SARADC_VIN5
T10	SARADC_VIN6	ADC6	SARADC_VIN6
T11	SARADC_VIN7	ADC7	SARADC_VIN7
T12	MIPI_CSI_RX_D0P	MIPI CSI 摄像头	MIPI_CSI_RX_D0P
T13	MIPI_CSI_RX_D0N		MIPI_CSI_RX_D0N
T14	MIPI_CSI_RX_D1P		MIPI_CSI_RX_D1P
T15	MIPI_CSI_RX_D1N		MIPI_CSI_RX_D1N
T16	MIPI_CSI_RX_D2P		MIPI_CSI_RX_D2P
T17	MIPI_CSI_RX_D2N		MIPI_CSI_RX_D2N
T18	MIPI_CSI_RX_D3P		MIPI_CSI_RX_D3P
T19	MIPI_CSI_RX_D3N		MIPI_CSI_RX_D3N
T20	MIPI_CSI_RX_CLK0P		MIPI_CSI_RX_CLK0P
T21	MIPI_CSI_RX_CLK0N		MIPI_CSI_RX_CLK0N
T22	MIPI_CSI_RX_CLK1P		MIPI_CSI_RX_CLK1P
T23	MIPI_CSI_RX_CLK1N		MIPI_CSI_RX_CLK1N
T24	CIF_CLKOUT		CIF_CLKOUT/EBC_GDCLK/PWM11_IR_M1/GPIO4_C0_d
T25	REFCLK_OUT_CAM		REFCLK_OUT/GPIO0_A0_d

四、联系方式

总公司：广州佩特电子科技有限公司

总公司地址：广州市天河区大观中路新塘大街鑫盛工业园 A1 栋 201

总公司网站：<http://www.gzpeite.net>

SMT 子公司：广州佩特精密电子科技有限公司（全资子公司）

子公司地址：广州市白云区人和镇大巷村顺景路 11 号

SMT 网站：<http://www.gzptjm.com>

官方淘宝店：<https://shop149045251.taobao.com>

微信扫描二维码联系支持人员：



广州佩特电子科技有限公司

2023 年 1 月